

## Review Memo

TO: LEED Review Team  
FROM: Mallory Karch, LEED Project Coordinator  
DATE: 5/1/2014  
PROJECT NAME: StopWaste.org  
PROJECT ID: 10814498  
**SUBJECT:** Response to Review Comment: Indoor Environmental Quality  
Credit Daylight and Quality Views

### Review Comment:

The form has been completed using Option 1 Daylight Measurements and Option 2 Quality Views, showing 50.41% Daylighted space and 92.79% with access to quality views.

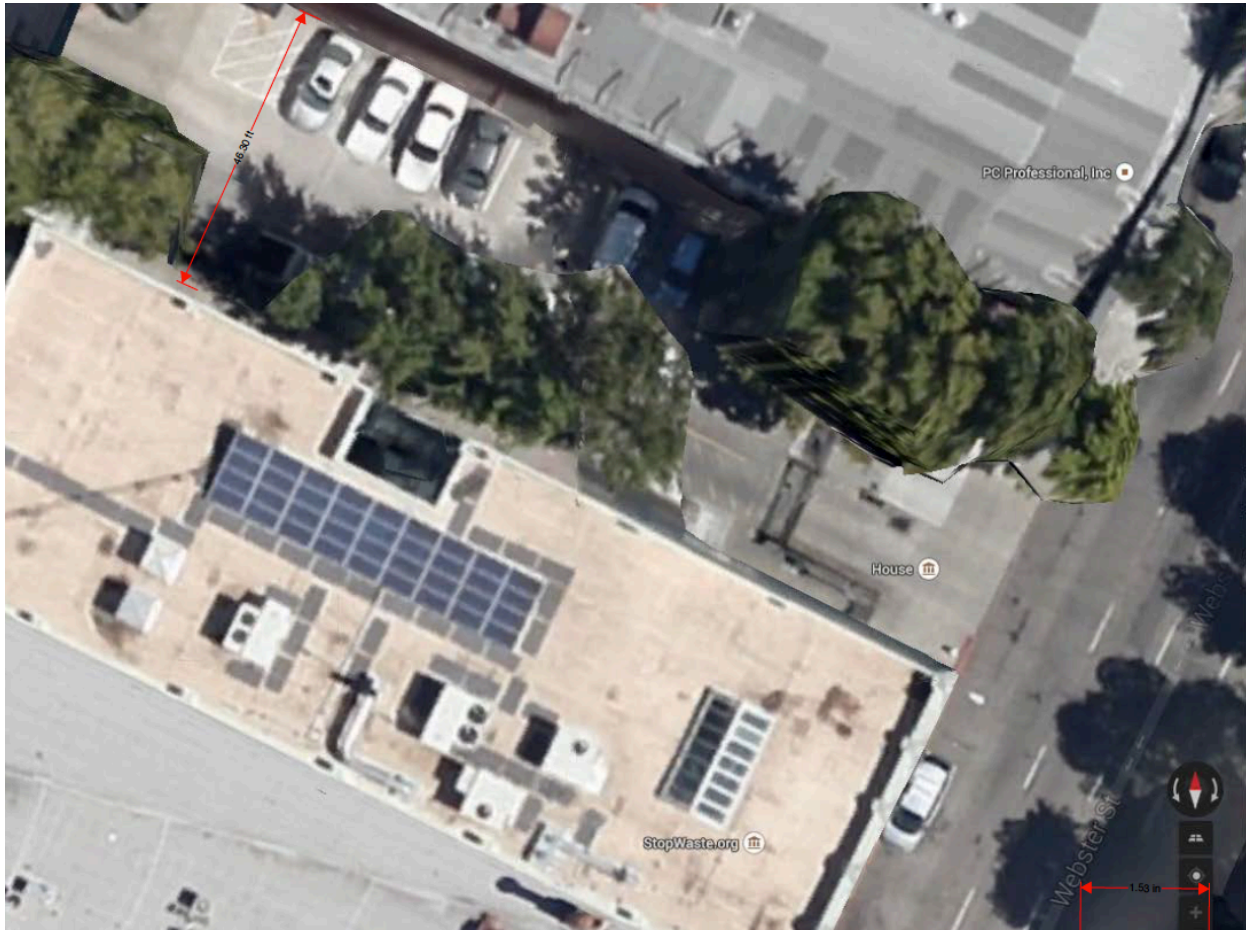
Note that the view quality is unclear for certain spaces. The downstairs cubicle area appears to include a view to a brick wall, which may not meet the requirements of View Type 2 or 3. Generally views through doorways with solid doors do not count. In addition, it is unclear whether the view to a window across the building meets the view quality criteria because there are a number of obstacles blocking the view.

Additionally, for future submittals, please complete the offline calculator using a space-by-space breakdown rather than listing the entire floor on one row.

### Response:

In one of the photographs does indeed show that a brick building is included in the view. It is approximately 46 feet away from the project building. The space in between the project building and its neighboring building include vegetation such as trees, a parking lot with moving people and vehicles, the sky and other such regular city activities. These other features as well as the relative distance from the project building are indicated in the Google Earth image shown below (Figure 1). (this image has also been uploaded under file name "StopWaste.org\_IEQc5\_Views\_Figure1.pdf). The office/cubicle that may be in question is a ground floor space, approximately 30 feet from the front corner of the project building. The project team is confident that this image demonstrates compliance for this space. Conservatively, if this space were not compliant, credit compliance would not be effected by removing the space from

the calculations, as views are available to nearly all of the project buildings occupants with multiple view types without question.



**Figure 1 - Distance between project building and brick wall**

Additionally, the project team noticed that one of the cubicles does not have access to views. It has been removed from the calculation (133.09 square feet).

It should also be noted that many spaces in the project building have access to quality views via second story windows. These windows generally have a view of trees and sky. Views solely through doorways or solid doors have not been included in the calculation.