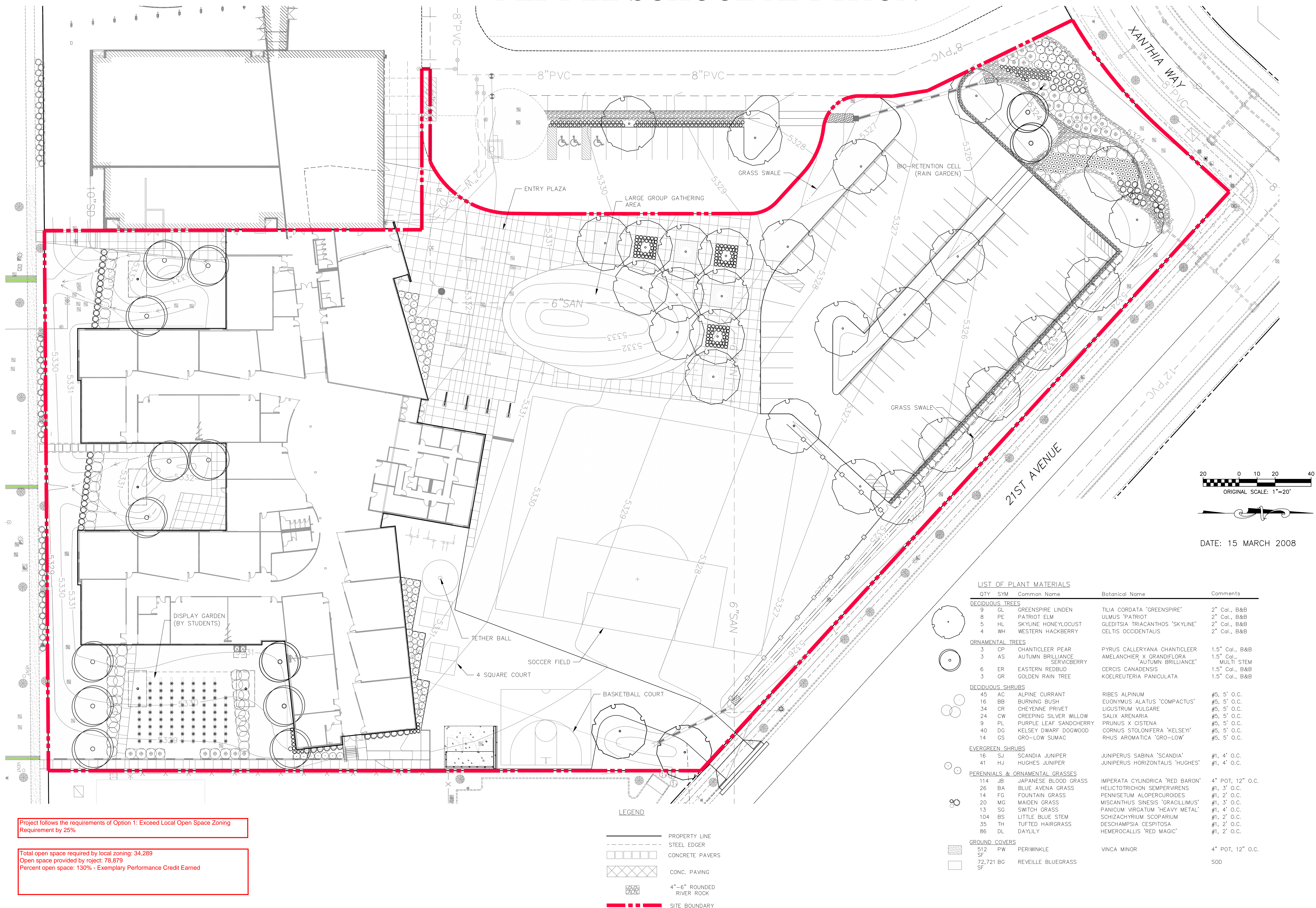


DENVER SCHOOL OF SCIENCE AND TECHNOLOGY

MIDDLE SCHOOL ADDITION



Project follows the requirements of Option 1: Exceed Local Open Space Zoning Requirement by 25%

Total open space required by local zoning: 34,289
Open space provided by project: 78,879
Percent open space: 130% - Exemplary Performance Credit Earned

LIST OF PLANT MATERIALS				
QTY	SYM	Common Name	Botanical Name	Comments
DECIDUOUS TREES				
9	GL	GREENSPIRE LINDEN	TILIA CORDATA 'GREENSPIRE'	2" Cal., B&B
8	PE	PATRIOT ELM	ULMUS 'PATRIOT'	2" Cal., B&B
5	HL	SKYLINE HONEYLOCUST	GLEDITSIA TRIACANTHOS 'SKYLINE'	2" Cal., B&B
4	WH	WESTERN HACKBERRY	CELTIS OCCIDENTALIS	2" Cal., B&B
ORNAMENTAL TREES				
3	CP	CHANTICLEER PEAR	PYRUS CALLERYANA CHANTICLEER	1.5" Cal., B&B
3	AS	AUTUMN BRILLIANCE SERVICEBERRY	AMELANCHIER X GRANDIFLORA 'AUTUMN BRILLIANCE'	1.5" Cal., B&B
6	ER	EASTERN REDBUD	CERCOIS CANADENSIS	1.5" Cal., B&B
3	GR	GOLDEN RAIN TREE	KOELREUTERIA PANICULATA	1.5" Cal., B&B
DECIDUOUS SHRUBS				
45	AC	ALPINE CURRANT	RIBES ALPINUM	#5, 5' O.C.
16	BB	BURNING BUSH	EUONYMUS ALATUS 'COMPACTUS'	#5, 5' O.C.
34	OR	CHEYENNE PRIVET	LIGUSTRUM VULGARE	#5, 5' O.C.
24	CW	CREeping SILVER WILLOW	SALIX ARENARIA	#5, 5' O.C.
9	PL	PURPLE LEAF SANDCHERRY	PRUNUS X CISTENA	#5, 5' O.C.
40	DG	KELSEY DWARF DOGWOOD	CORNUS STOLONIFERA 'KELSEY'	#5, 5' O.C.
14	GS	GRO-LOW SUMAC	RHUS AROMATICA 'GRO-LOW'	#5, 5' O.C.
EVERGREEN SHRUBS				
16	SJ	SCANDIA JUNIPER	JUNIPERUS SABINA 'SCANDIA'	#1, 4' O.C.
41	HJ	HUGHES JUNIPER	JUNIPERUS HORIZONTALIS 'HUGHES'	#1, 4' O.C.
PERENNIALS & ORNAMENTAL GRASSES				
114	JB	JAPANESE BLOOD GRASS	IMPERATA CYLINDRICA 'RED BARON'	4" POT, 12" O.C.
26	BA	BLUE AVENA GRASS	HELICTOTRICHON SEMPERVIRENS	#1, 3' O.C.
14	FG	FOUNTAIN GRASS	PENNISETUM ALOPERCUROIDES	#1, 2' O.C.
20	MG	MAIDEN GRASS	MISCANTHUS SINESIS 'GRACILLIMUS'	#1, 3' O.C.
13	SG	SWITCH GRASS	PANICUM VIRGATUM 'HEAVY METAL'	#1, 4' O.C.
104	BS	LITTLE BLUE STEM	SCHIZACHYRIUM SCOPARIUM	#1, 2' O.C.
35	TH	TUFTED HAIRGRASS	DESCHAMPSIA CESPITOSA	#1, 2' O.C.
86	DL	DAYLILY	HEMEROCALLIS 'RED MAGIC'	#1, 2' O.C.
GROUND COVERS				
512	PW	PERIWINKLE	VINCA MINOR	4" POT, 12" O.C.
72,721	BG	REVEILLE BLUEGRASS		SOD

- LEGEND
- PROPERTY LINE
 - STEEL EDGER
 - CONCRETE PAVERS
 - CONC. PAVING
 - 4"-6" ROUNDED RIVER ROCK
 - SITE BOUNDARY

