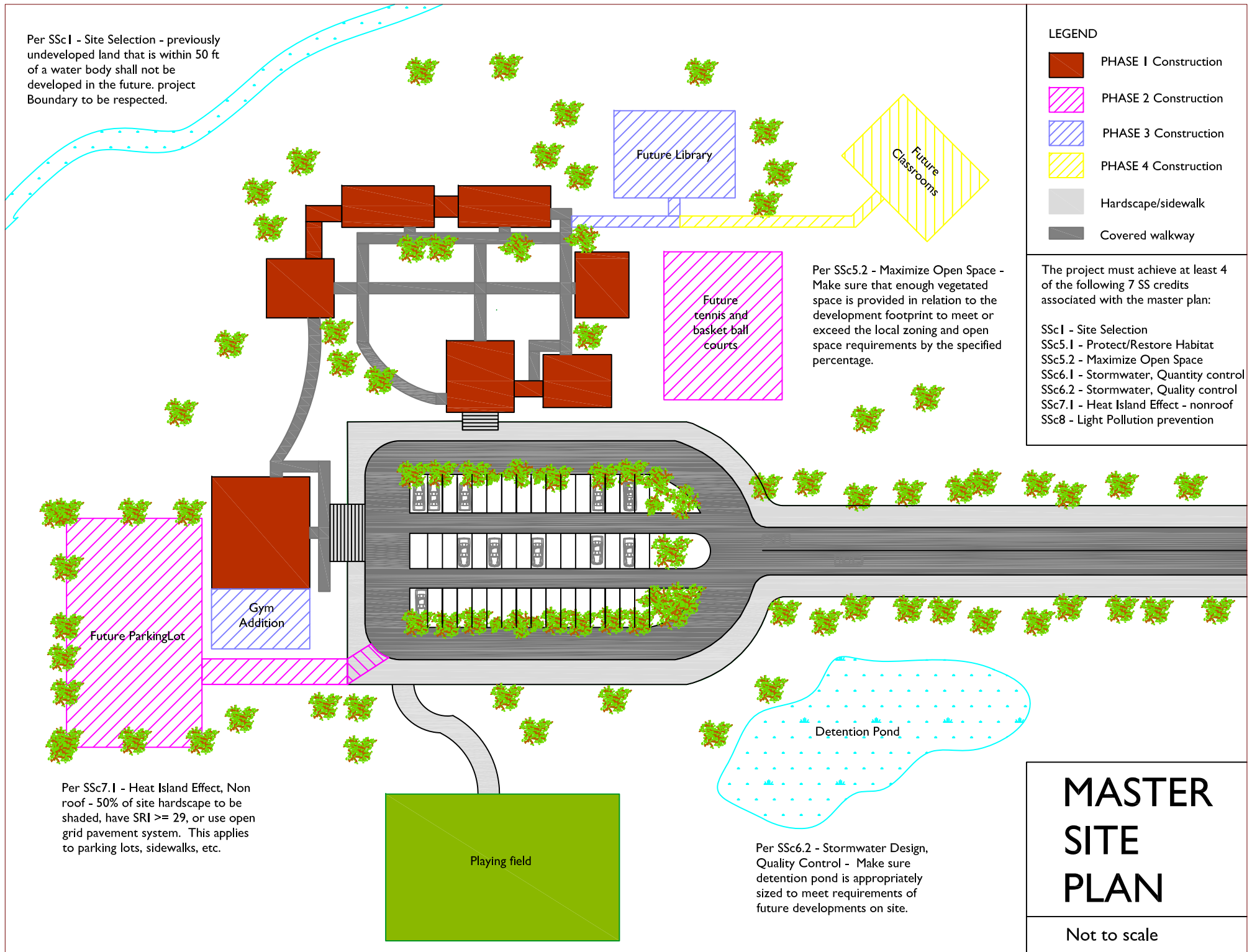


Per SSc1 - Site Selection - previously undeveloped land that is within 50 ft of a water body shall not be developed in the future. project Boundary to be respected.



# LEGEND

- PHASE 1 Construction
- PHASE 2 Construction
- PHASE 3 Construction
- PHASE 4 Construction
- Hardscape/sidewalk
- Covered walkway

The project must achieve at least 4 of the following 7 SS credits associated with the master plan:

- SSc1 - Site Selection
- SSc5.1 - Protect/Restore Habitat
- SSc5.2 - Maximize Open Space
- SSc6.1 - Stormwater, Quantity control
- SSc6.2 - Stormwater, Quality control
- SSc7.1 - Heat Island Effect - nonroof
- SSc8 - Light Pollution prevention

Per SSc5.2 - Maximize Open Space - Make sure that enough vegetated space is provided in relation to the development footprint to meet or exceed the local zoning and open space requirements by the specified percentage.

Per SSc7.1 - Heat Island Effect, Non roof - 50% of site hardscape to be shaded, have SRI  $\geq 29$ , or use open grid pavement system. This applies to parking lots, sidewalks, etc.

Per SSc6.2 - Stormwater Design, Quality Control - Make sure detention pond is appropriately sized to meet requirements of future developments on site.

## MASTER SITE PLAN

Not to scale