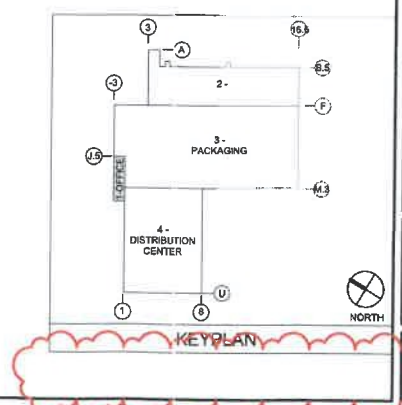
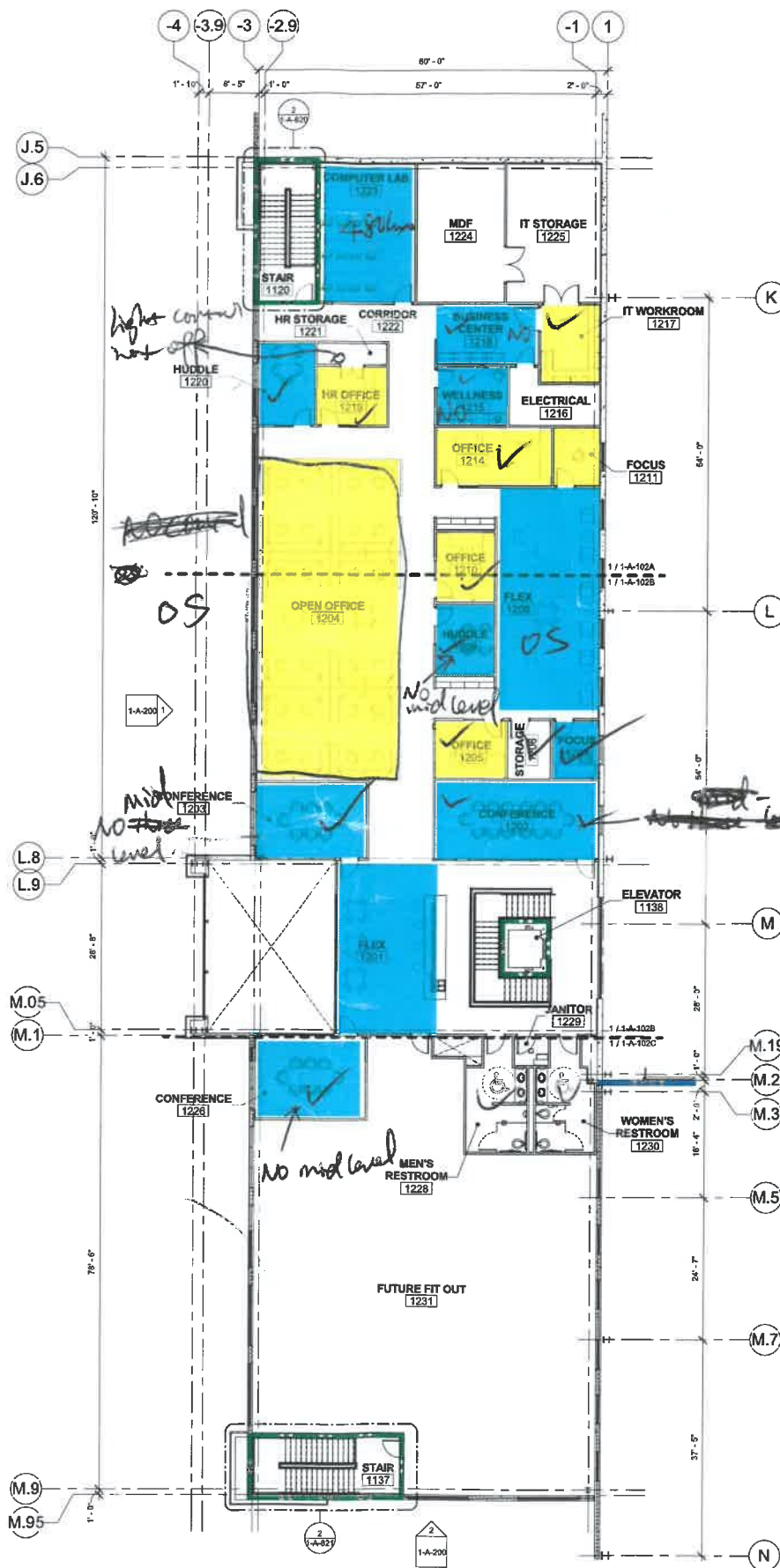


Individual occupant spaces. Provide individual lighting controls that enable occupants to adjust the lighting to suit their individual tasks and preferences, with at least three lighting levels or scenes (on, off, midlevel).

Shared occupant spaces. 1. Provide in place multizone control systems that enable occupants to adjust the lighting to meet group needs and preferences, with at least lighting levels or scenes (on, off, midlevel). 2. Provide separate control for the lighting of any presentation or projection wall. 3. Switches or manual controls must be located in the same space as the controlled luminaires.

1 OVERALL FIRST FLOOR PLAN
3/32" = 1'-0"



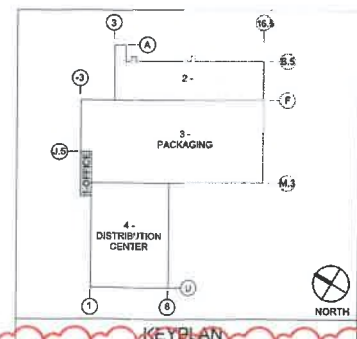


Individual occupant spaces. Provide individual lighting controls that enable occupants to adjust the lighting to suit their individual tasks and preferences, with at least three lighting levels or scenes (on, off, midlevel).

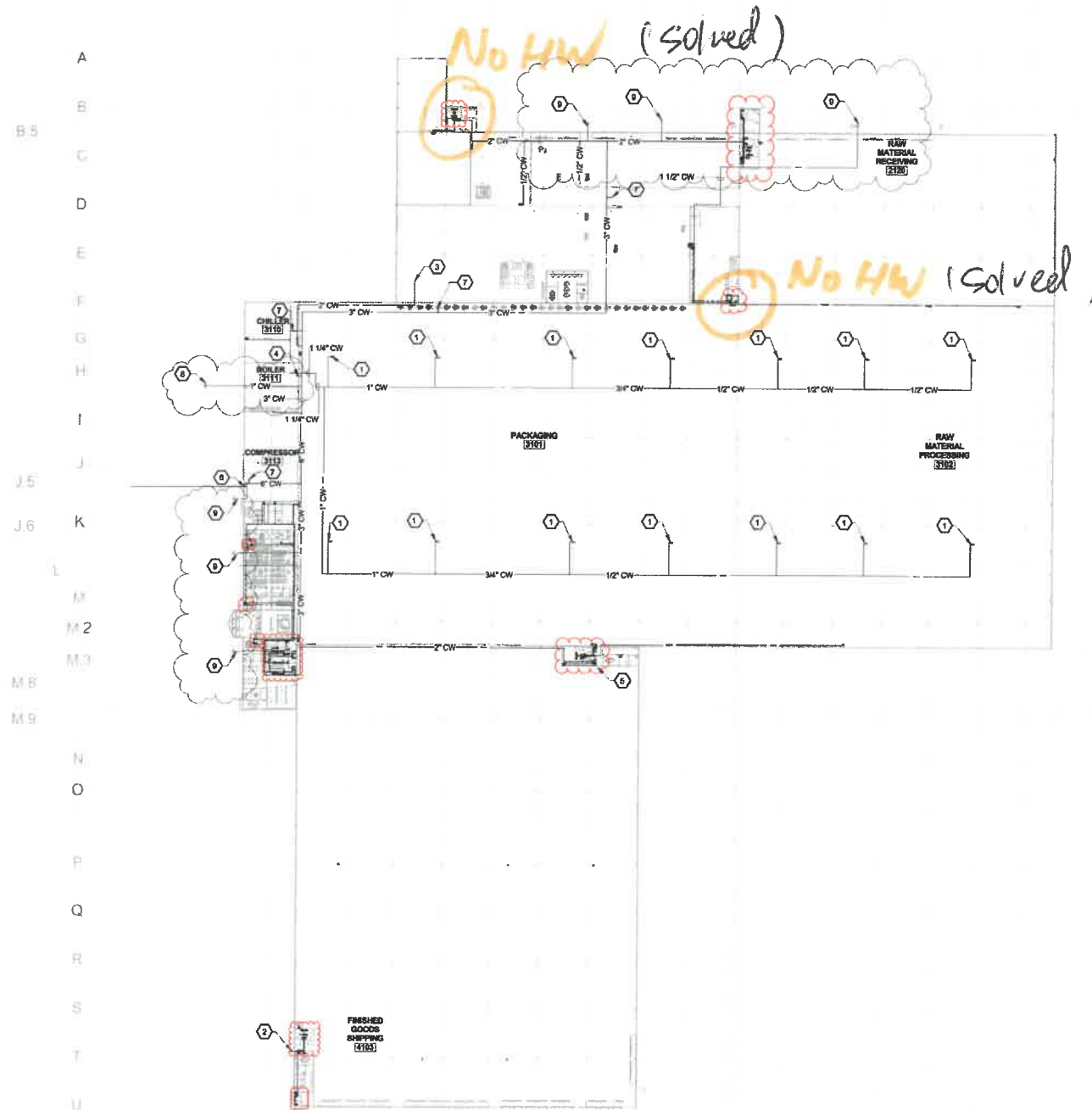
Shared occupant spaces. 1. Provide in place multizone control systems that enable occupants to adjust the lighting to meet group needs and preferences, with at least lighting levels or scenes (on, off, midlevel). 2. Provide separate control for the lighting of any presentation or projection wall. 3. Switches or manual controls must be located in the same space as the controlled luminaires.

construction
No water

1 OVERALL SECOND FLOOR PLAN
3/32" = 1'-0"

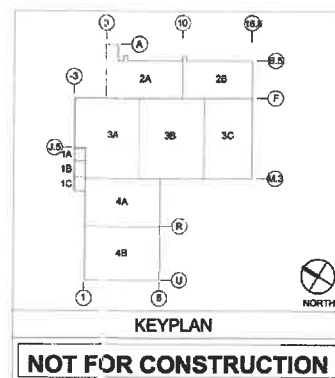


3 2 1 2 3 4 5 6 7 8 9 10 11 12 13 14 15 16 16.5



- KEYED NOTES**
- 1 1/2" VALVED COLD WATER TO HUMIDIFIER ON THE ROOF
 - 2 1/2" COLD WATER ENTRANCE
 - 3 2" COLD WATER TO QUENCHING AT ROASTERS. SEE 2-P-409 FOR CONTINUATION.
 - 4 1 1/4" COLD WATER. SEE SHEET 3-P-102 FOR CONTINUATION
 - 5 SEE SHEET 1/4-P-408 CONTINUATION
 - 6 6" CW UP TO BELOW ROOF STEEL WITH SHUTOFF VALVE AND PRESSURE GAUGE AT 4'-0" A.F.F.
 - 7 3" CAP AND VALVE FOR FUTURE
 - 8 YARD HYDRANT AT DUMPSTER SEE CIVIL
 - 9 WALL HYDRANT

1 OVERALL WATER DISTRIBUTION PLAN
1/64" = 1'-0"



3 29

26

21

2

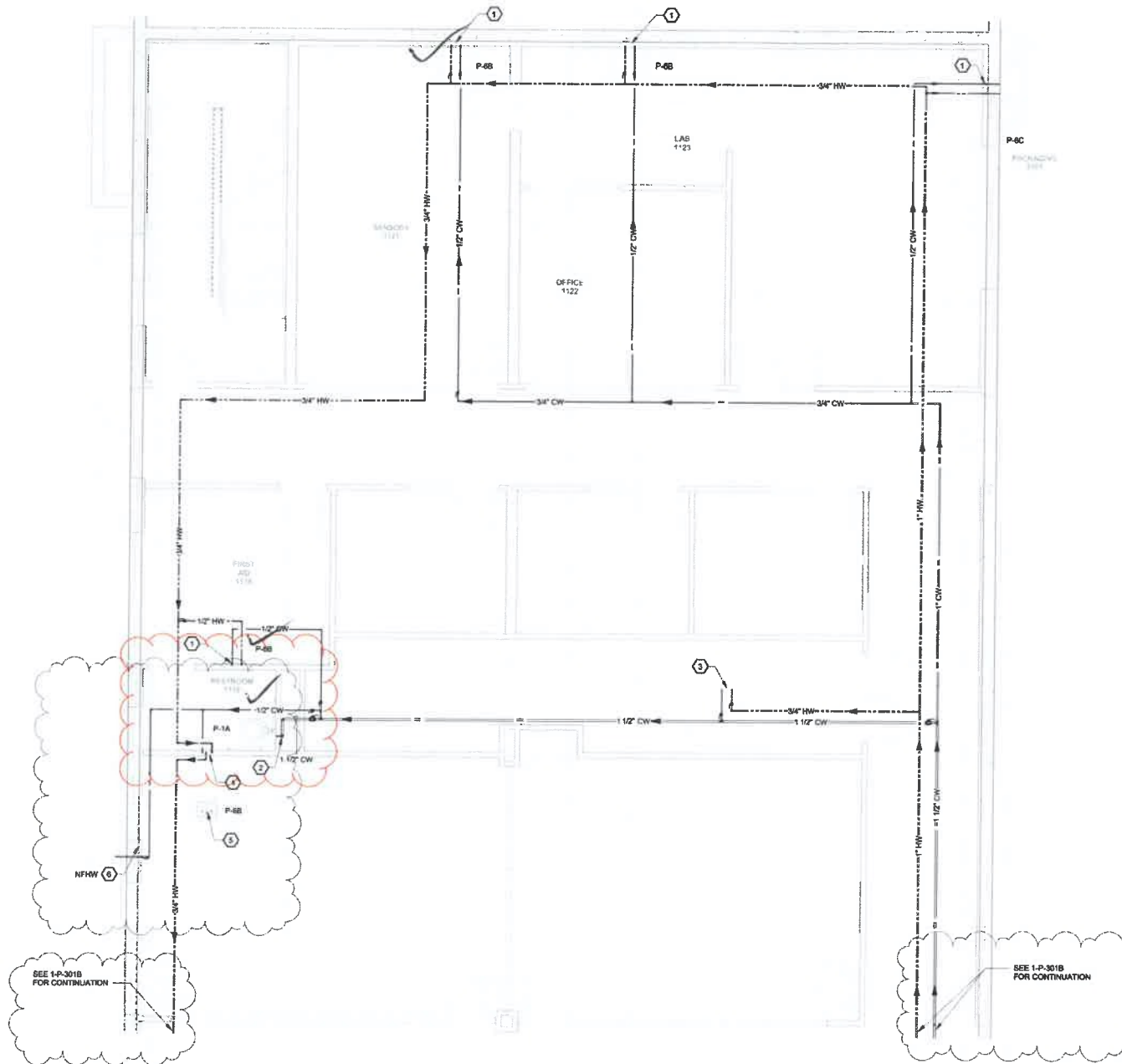
19

1 1 11

J5

J6

K



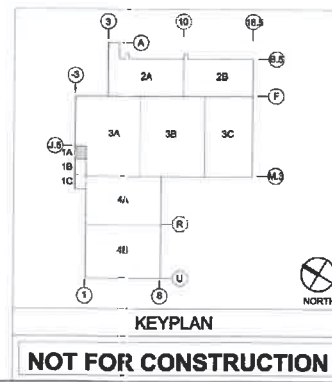
KEYED NOTES

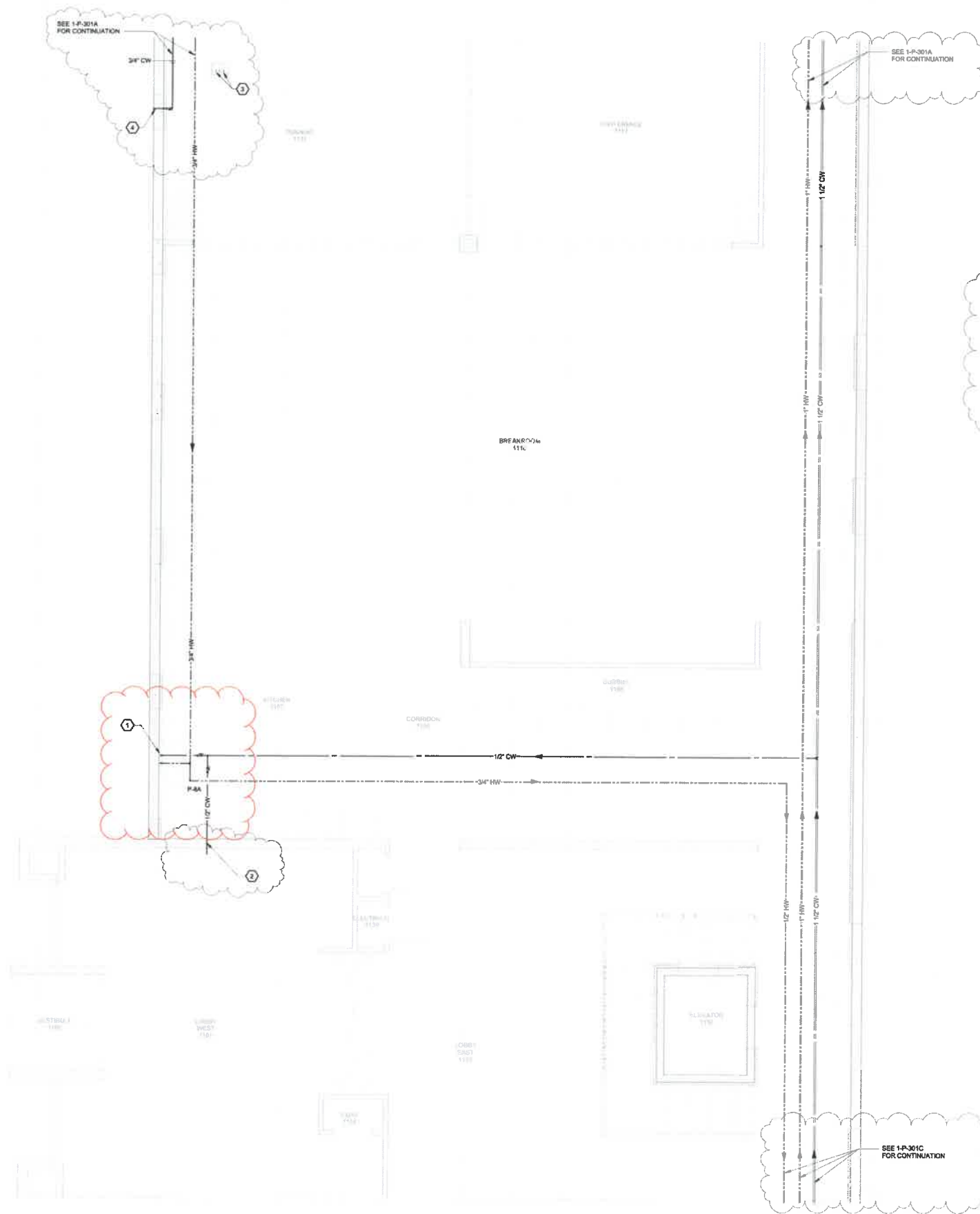
- ① 1/2" HOT AND COLD WATER DROP IN FUR OUT TO FIXTURE
- ② 1 1/4" COLD WATER DROP TO FIXTURE
- ③ 1/2" H/CW UP
- ④ 1/2" COLD 3/4" HOT DOWN IN WALL AND 3/4" HOT WATER UP IN WALL
- ⑤ 1/2" COLD AND HOT WATER UP FROM BELOW FLOOR
- ⑥ 1/2" COLD WATER DOWN

SEE 1-P-301B
FOR CONTINUATION

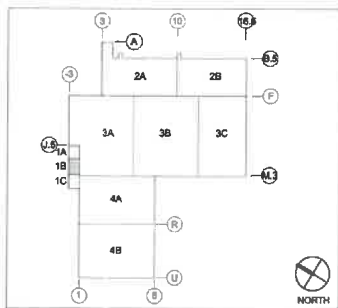
SEE 1-P-301B
FOR CONTINUATION

1 WATER DISTRIBUTION FIRST FLOOR PLAN - OFFICE
1/4" = 1'-0"





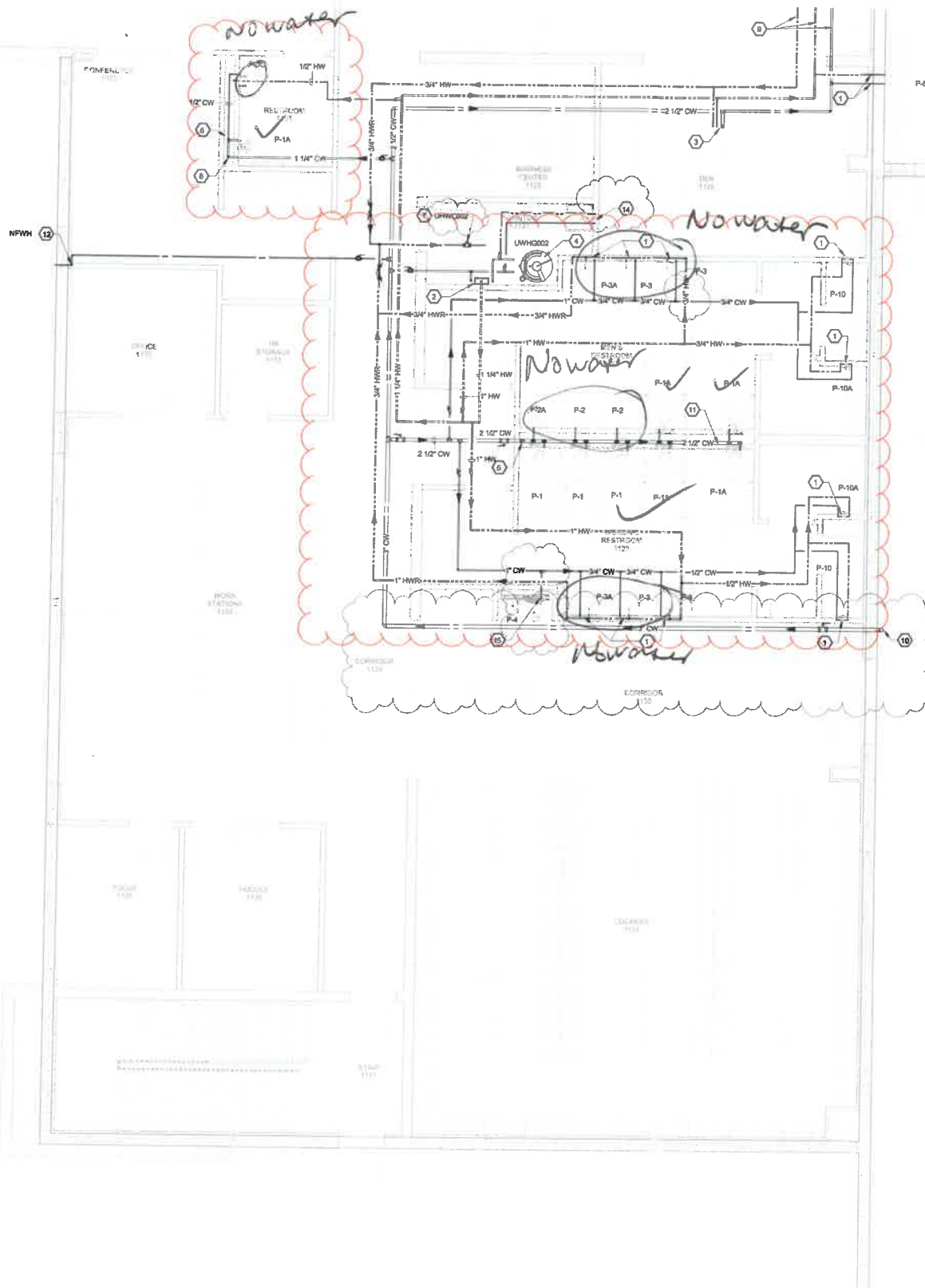
- KEYED NOTES**
- ① 1/2" CW & HW DROP TO FIXTURE BELOW
 - ② ROUTE 1/2" COLD WATER DOWN IN WALL AND CONNECT TO FILTER SYSTEM IN MILL WORK. PROVIDE OMNIPURE WATER FILTER KIT PART# 5572 AT BREWING SYSTEM
 - ③ 1/2" CW & HW UP FROM BELOW GRADE TO SINK.
 - ④ 3/4" CW TO NON-FREEZE WALL HYDRANT.
 - ⑤ 1/2" CW & HW UP FROM BELOW GRADE TO SINK.



1 WATER DISTRIBUTION FIRST FLOOR PLAN - OFFICE
1/4" = 1'-0"

NOT FOR CONSTRUCTION

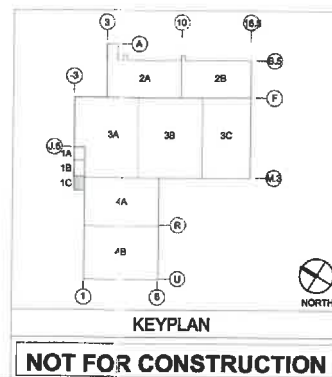
All issues have been solved.



KEYED NOTES

- 1 1/2" COLD AND HOT WATER DROP TO FIXTURE BELOW
- 2 THERMOSTATIC MIXING VALVE MOUNTED ON WALL
- 3 2 1/2" CW, 3/4" HW, 3/4" HWR UP TO FLOOR ABOVE
- 4 UH002: 1-1/2" INLET/OUTLET, 199 MBH INPUT, 1-1/4" LOW PRESSURE GAS, WITH GAS COCK AND DRT LEG, TO WATER HEATER
- 5 2-1/2" CW DOWN INTO CHASE WITH FULL SIZE HEADER
- 6 1" CW TO P-1A, PROVIDE WHA-A"
- 7 HOT WATER RECIRCULATION PUMP
- 8 1-1/4" CW ON IN CHASE
- 9 SEE SHEET 0-P-301B FOR CONTINUATION
- 10 3" COLD WATER UP; SEE SHEET 0-P-103 FOR CONTINUATION
- 11 PROVIDE WHA-1"
- 12 1/2" COLD WATER DOWN
- 13 ISOLATION VALVE, CIRCUIT SETTER & CH50K VALVE
- 14 3/4" COLD & HOT WATER DROP TO FIXTURE BELOW
- 15 1/2" COLD WATER DROP TO FIXTURE

1 WATER DISTRIBUTION FIRST FLOOR PLAN - OFFICE
1/4" = 1'-0"



M 05
M 1

M 19
M 2
M 3

M 4

M 5

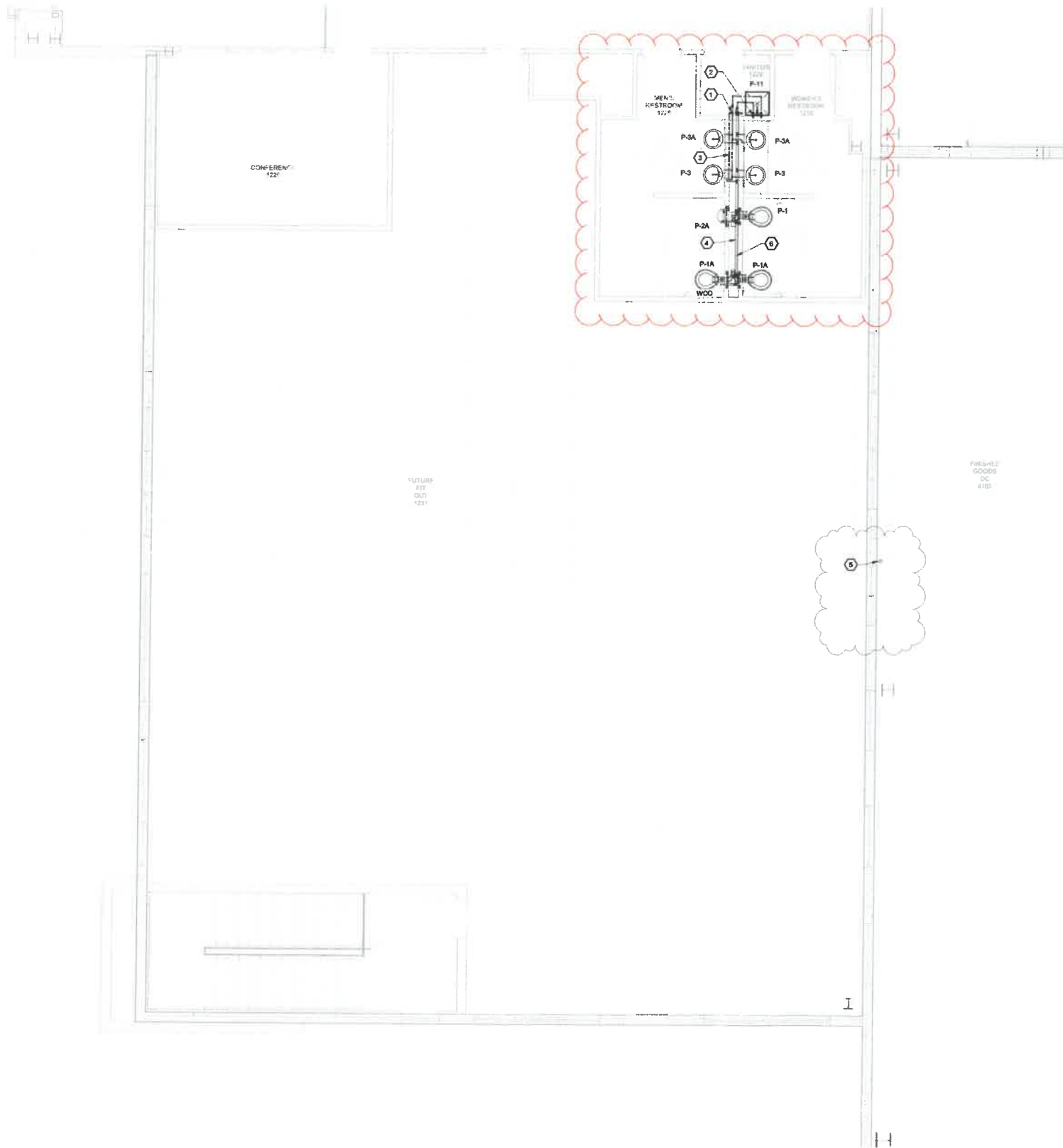
M 6

M 8

M 9

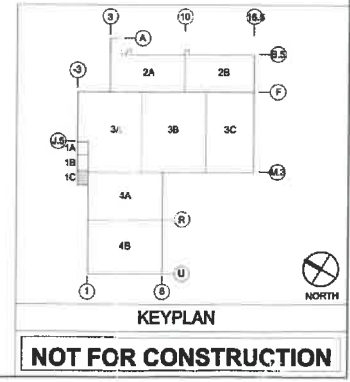
N

3 29 -26 21 2 -19 -1 1 17



- KEYED NOTES**
- ① 2 1/2" CW, 3/4" HW, 3/4" HWC FROM FLOOR BELOW W/ ISOLATION VALVES
 - ② 3/4" CW & HW DROP TO FIXTURE BELOW
 - ③ 3/4" HWC
 - ④ 2 1/2" CW HEADER
 - ⑤ 2" CW DOWN TO FLOOR BELOW
 - ⑥ PROVIDE WHA-C.

1 WATER DISTRIBUTION SECOND FLOOR PLAN - OFFICE
1/4" = 1'-0"



NOT FOR CONSTRUCTION

no water supply in sinks

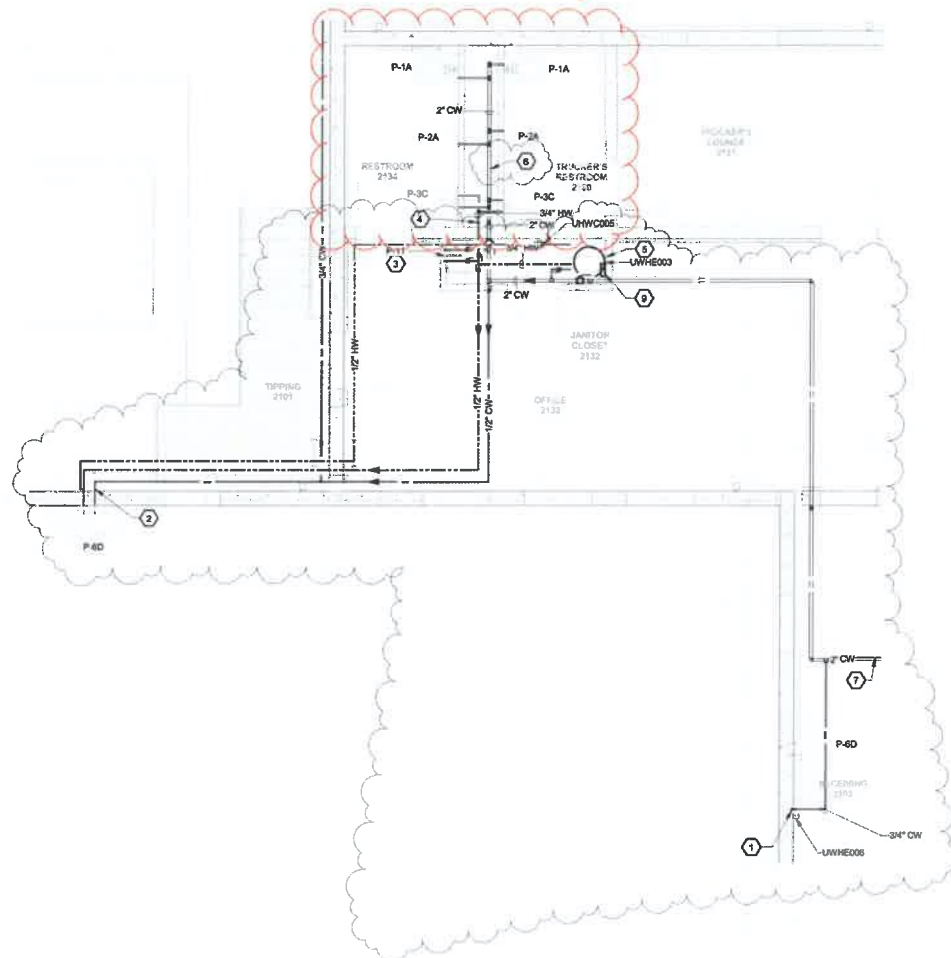
flushing does have water,

No HW (solved)

9 8 10 10 1

Trucker Trash & Recycle

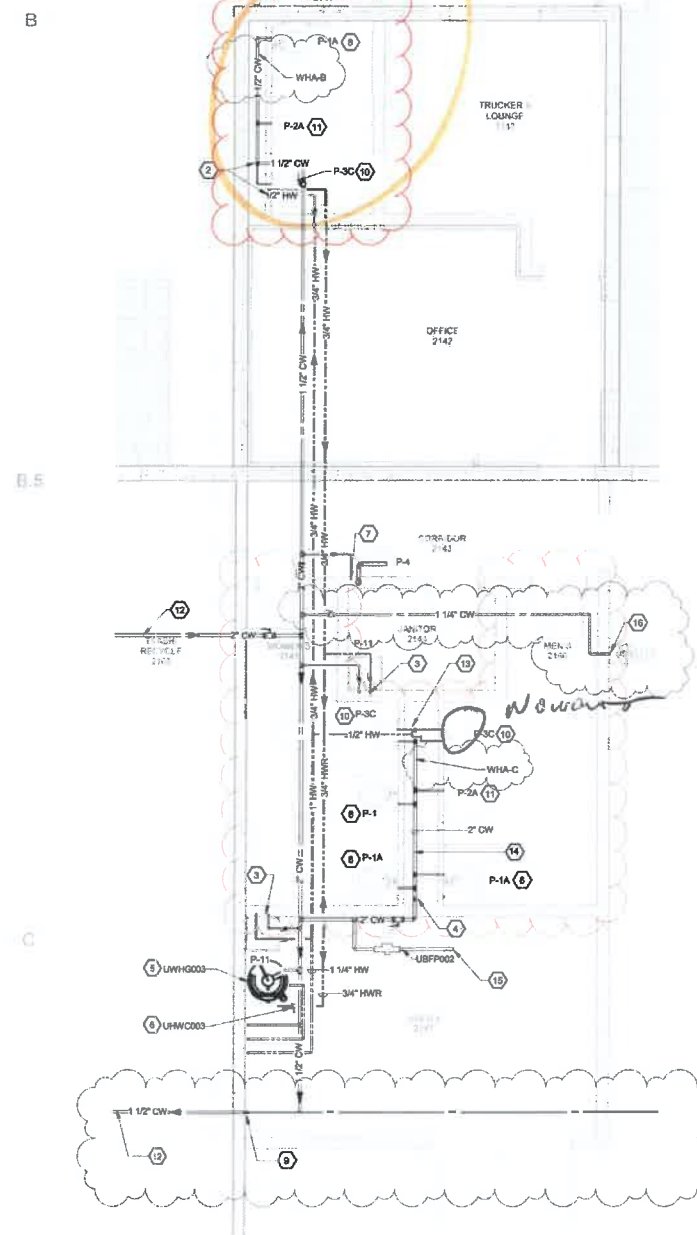
Trucker Raw Materials



1 FLOOR PLAN - RECEIVING OFFICE
1/4" = 1'-0"

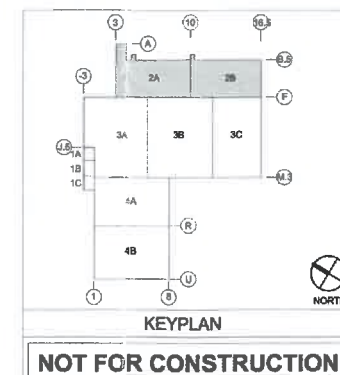
KEYED NOTES

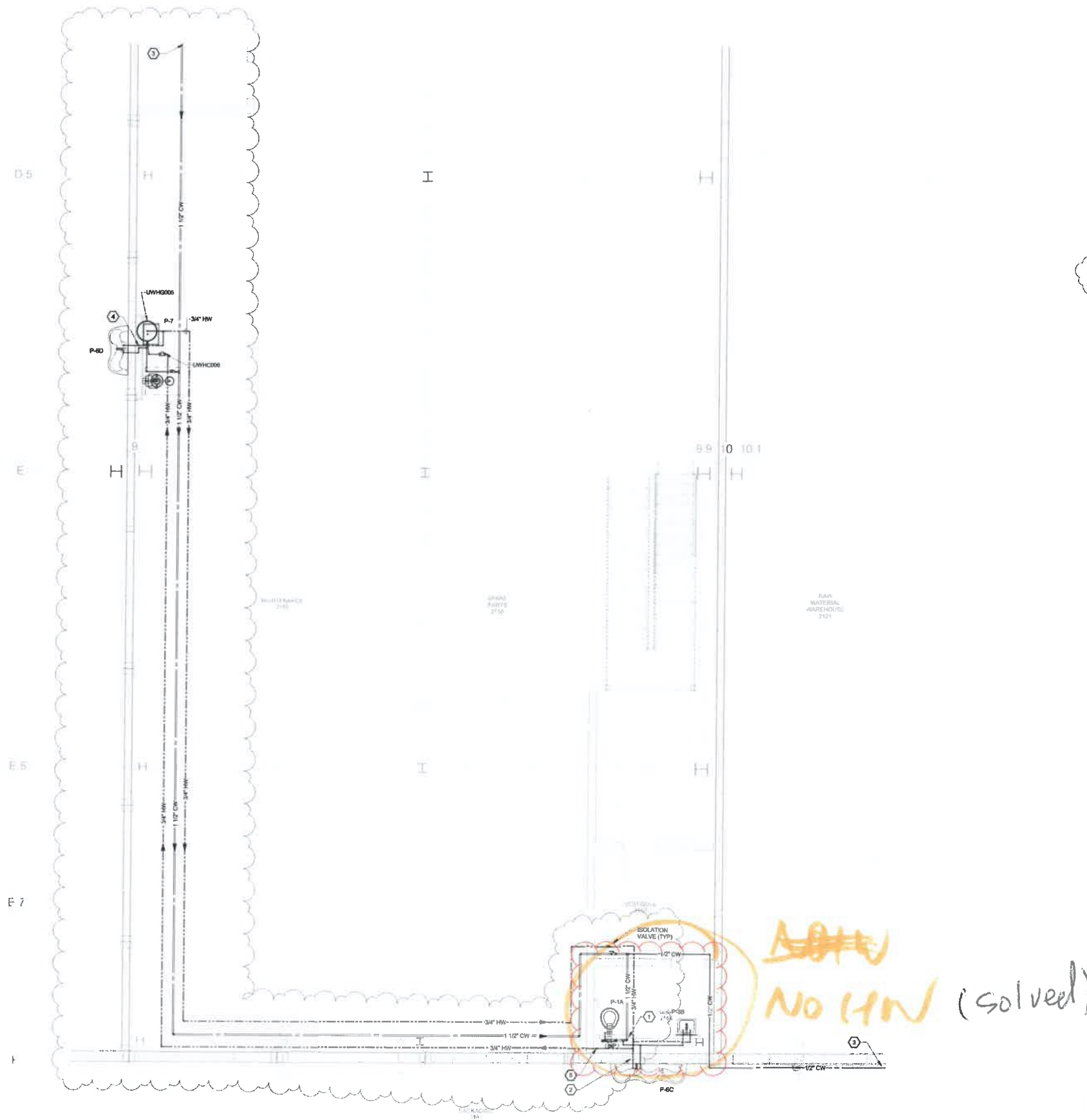
- 1 UNWHE003, 3/4" INLET/OUTLET, ROUTE T&P RELIEF TO MOP SINK.
- 2 1/2" COLD AND HOT WATER DROP TO FIXTURE
- 3 3/4" COLD AND HOT WATER DROP TO FIXTURE
- 4 2" COLD AND 1/2" HOT WATER DOWN IN CHASE
- 5 UNWHE003, 3/4" INLET/OUTLET, ROUTE T&P RELIEF TO MOP SINK.
- 6 2" COLD WATER IN CHASE RUN FULL SIZE HEADER
- 7 SEE SHEET 0-P-103 FOR CONTINUATION
- 8 THERMOSTATIC MIXING VALVE ON WALL ABOVE WATER HEATER



2 FLOOR PLAN - RAW MATERIALS OFFICE
1/4" = 1'-0"

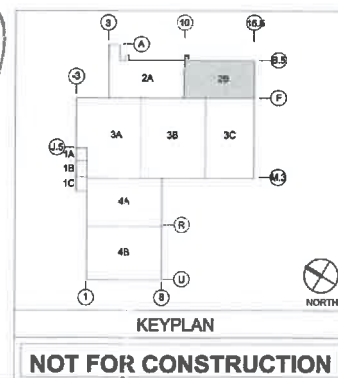
Trucker's Lounge



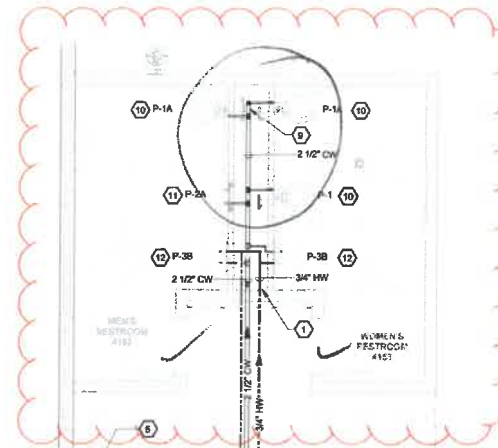


- KEYED NOTES**
- ① 1 1/2" CW AND 3/4" HW DOWN IN CHASE
 - ② ROUTE 1/2" CW AND HW TO FIXTURE.
 - ③ SEE SHEET 0-P-103 FOR CONTINUATION.
 - ④ ROUTE 1/2" CW AND HW DOWN IN CHASE AND DOWNED TO FIXTURE.
 - ⑤ 3/4" HW UP FROM PLUMBING CHASE

1 FLOOR PLAN - MAINTENANCE
1/4" = 1'-0"



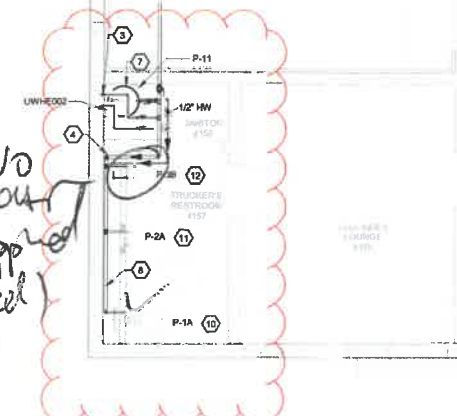
no water supplied (Solved)



KEYED NOTES

- 1 2 1/2" COLD AND 1/2" HOT WATER DOWN IN CHASE.
- 2 1/2" COLD WATER DROP TO FIXTURE.
- 3 3/4" COLD AND HOT WATER DROPS TO FIXTURE BELOW.
- 4 2" COLD WATER & 1/2" HOT WATER DOWN IN CHASE.
- 5 2 1/2" COLD WATER FROM BELOW WITH ISOLATION VALVE AND PRV.
- 6 WHE-1: 1" INLET/OUTLET. ROUTE TAP RELIEF TO MOP SINK BELOW. REFER TO PLUMBING DETAILS FOR WALL MOUNTING AND PIPING LAYOUT.
- 7 WHE-2: 1" INLET/OUTLET. ROUTE TAP RELIEF TO MOP SINK BELOW. REFER TO PLUMBING DETAILS FOR WALL MOUNTING AND PIPING LAYOUT.
- 8 PROVIDE WATER HAMMER ARRESTOR WMA"X".
- 9 PROVIDE WATER HAMMER ARRESTOR WMA"X".
- 10 1" CW TO WATER CLOSET.
- 11 3/4" CW TO URINAL.
- 12 1/2" CW, 1/2" HW FOR LAVATORY.

1

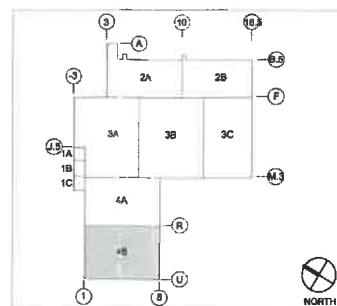


No water supplied (Solved)

Lighting checked

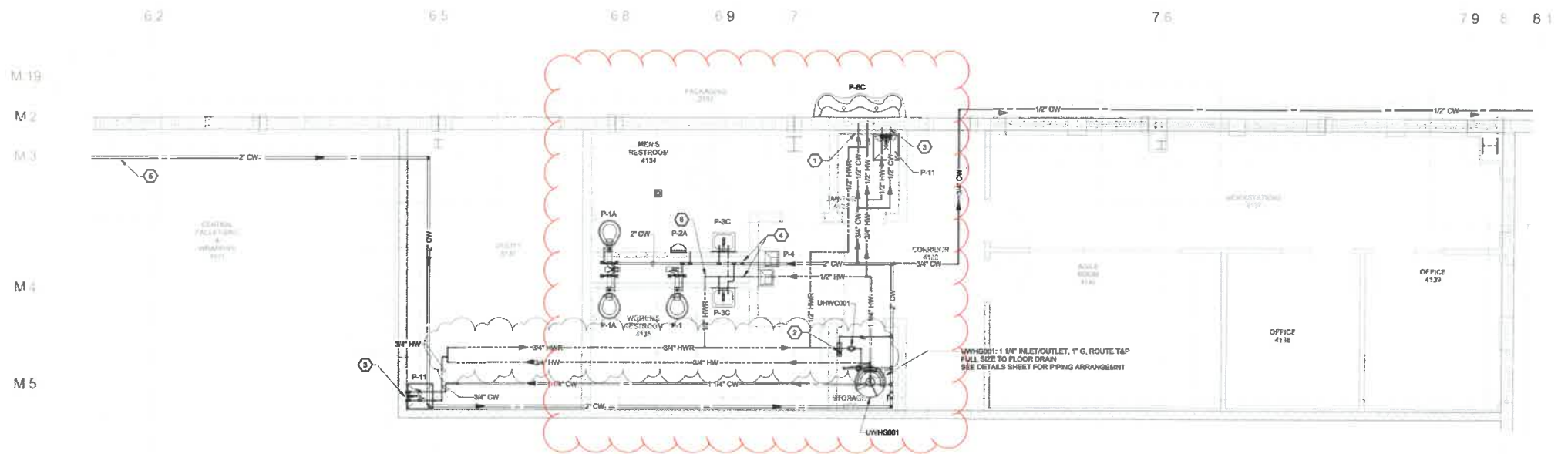
1 WATER DISTRIBUTION PLAN - DISTRIBUTION CENTER

1/4" = 1'-0"



KEYPLAN

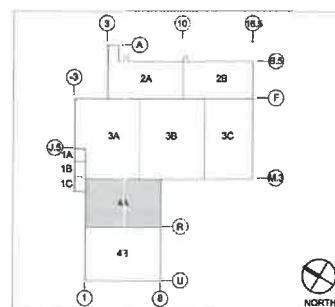
NOT FOR CONSTRUCTION



1 WATER DISTRIBUTION PLAN - DISTRIBUTION CENTER 1/4" = 1'-0"

KEYED NOTES

- 1 1/2" COLD AND HOT WATER DROP TO FIXTURE
- 2 1/2" COLD WATER DROP TO MIN-ELECTRIC TRAP PRIMER
- 3 3/4" COLD AND HOT WATER DROP TO FIXTURE
- 4 2 1/2" COLD, 1/2" HOT WATER DOWN IN CHASE
- 5 2" COLD WATER SEE SHEET O-P-103
- 6 1/2" HWR UP TO ABOVE CEILING



KEYPLAN

NOT FOR CONSTRUCTION