



KEY NOTES

- L06 SEE DRAWING E-920.2A FOR LIGHTING PANEL ULPK01A LOCATION.  
L07 CONNECT R1 FIXTURES TO DIMMER SWITCH. CONNECT R11 FIXTURES TO STANDARD LIGHT SWITCH.  
L14 CONNECT FIXTURES ENCLOSED IN THIS REGION TO DAYLIGHTING SENSOR.  
L16 EMERGENCY LIFE SAFETY PANEL ULSH03A IS LOCATED ON ELECTRICAL ROOM MEZZANINE. SEE SHEET 3-E-101A1.

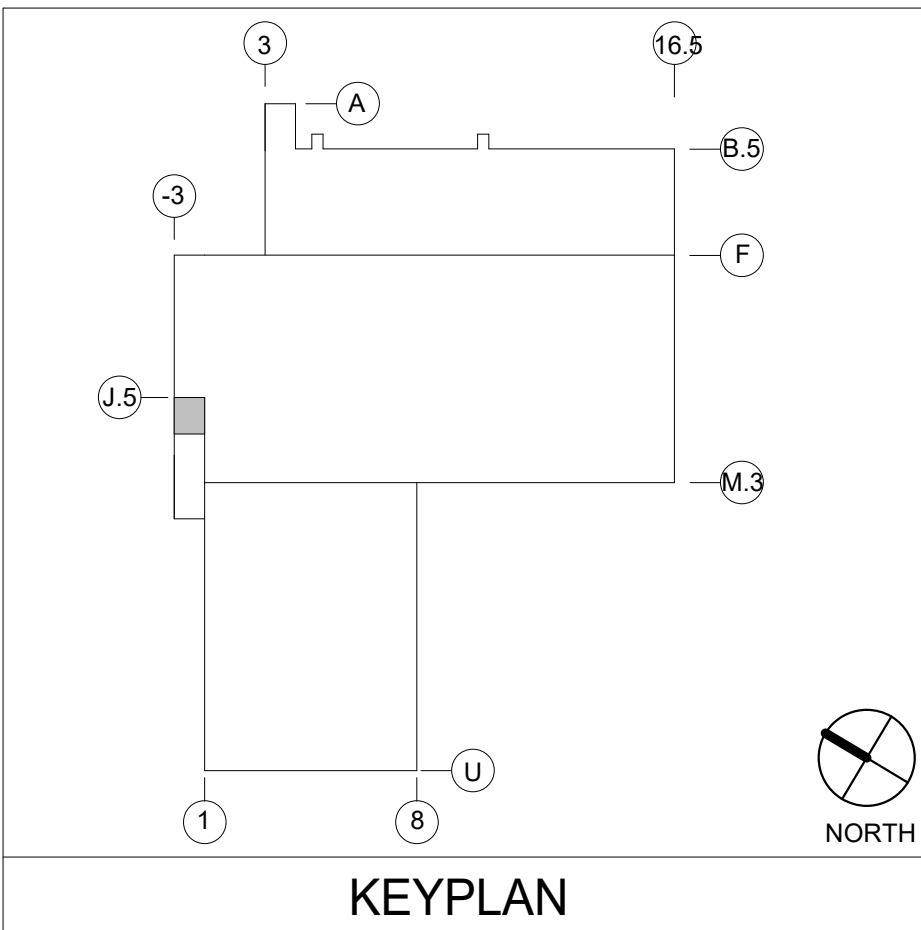
Line Voltage Controls

	Description	Quantity	Comments
2	Snapshot	1	OMNIDT2000BP1277
\$LVD	Snapshot	9	LVSD-M-3-WH
\$LV	Snapshot	15	LVS-M-1-NP-WH
\$OS	Snapshot	26	LHMTS1-N-WH
PP	Snapshot	33	UVPPM
\$DOS	Snapshot	34	LHDMMTS2-N-WH
1	Snapshot	40	OMNIDT2000

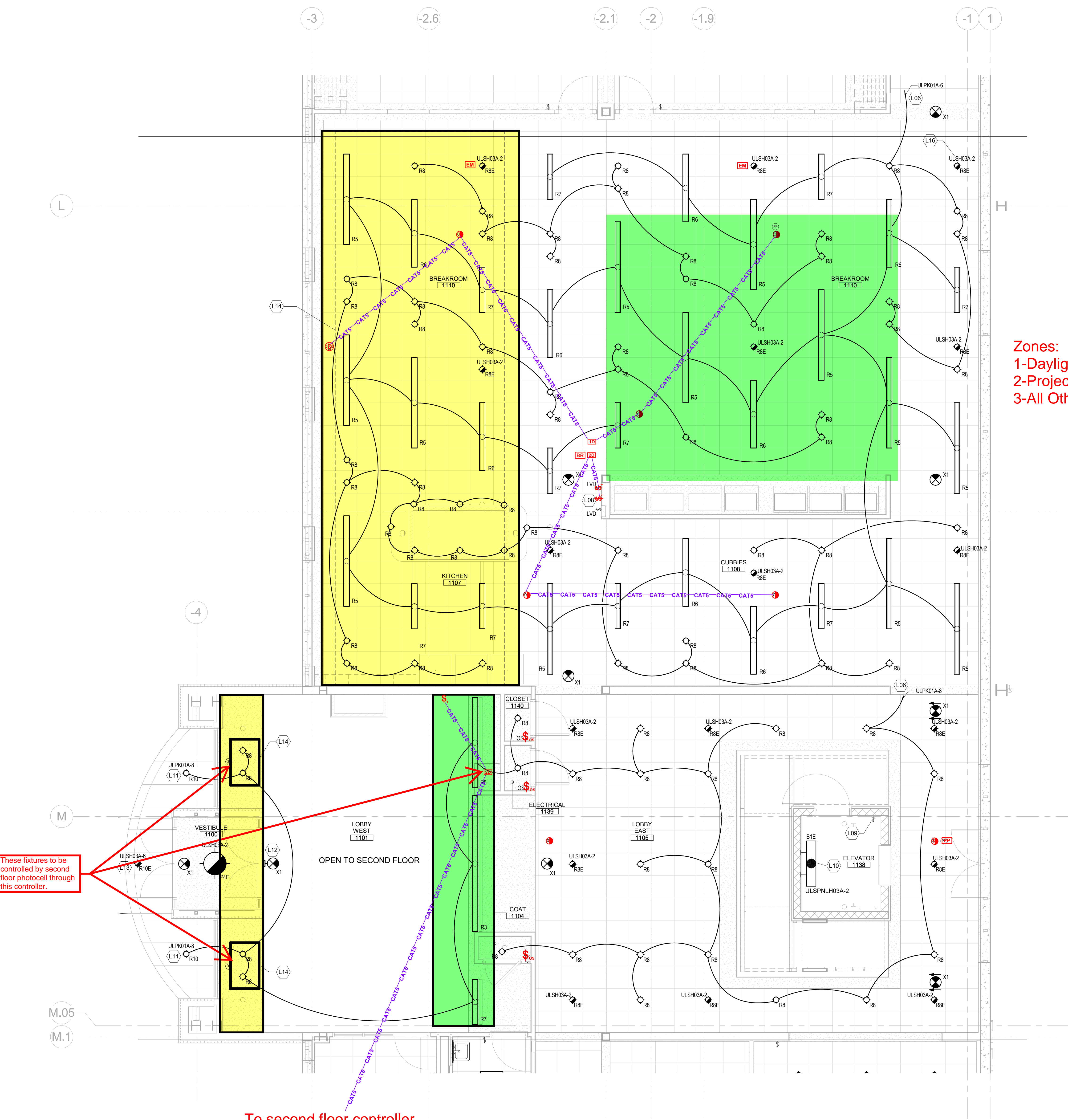
NX Controls

	Description	Quantity	Comments
1D	Snapshot	3	Hubbell NX Single Relay Dimming Controller
BR	Snapshot	4	NXBTR
2D	Snapshot	7	Hubbell NX Double Relay Dimming Controller
\$	Snapshot	7	NX Switch O/O/R/L
D	Snapshot	7	NXDS
1	Snapshot	21	NX Ceiling OCC Sensor
EM	Snapshot	24	RR1SPDTC120

1 FIRST FLOOR OFFICE AREA A - LIGHTING  
1/4" = 1'-0"







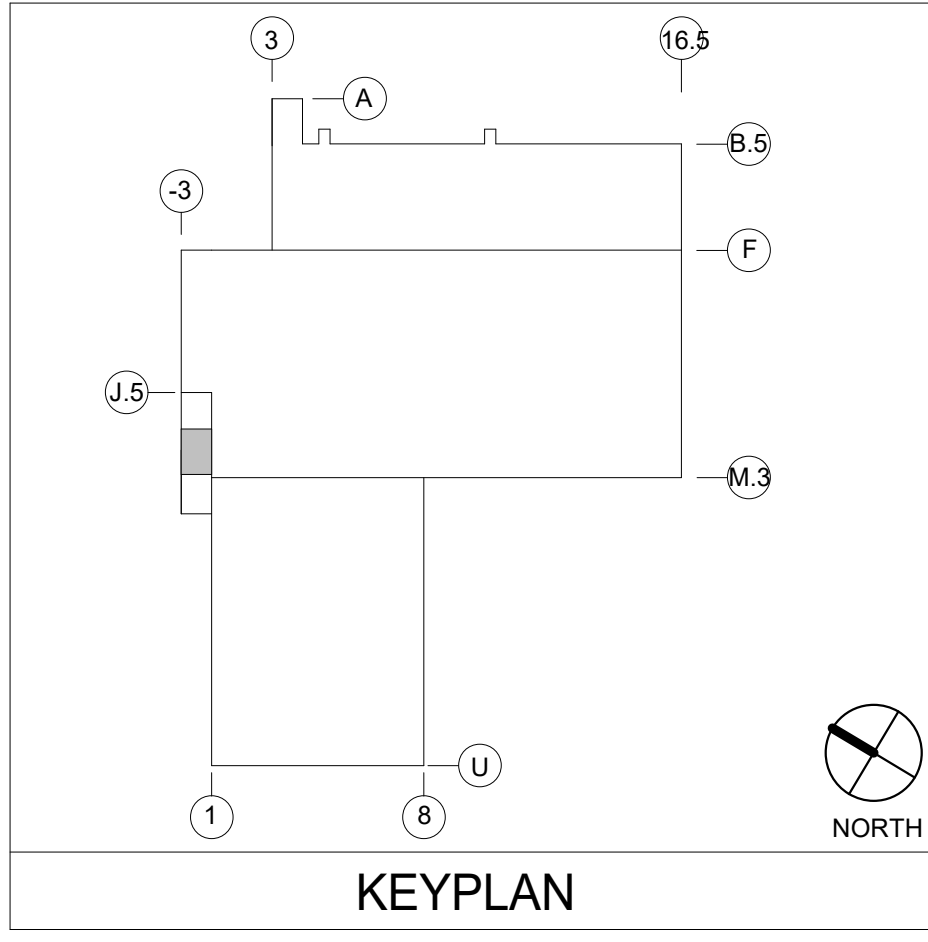
KEY NOTES

- L06 SEE DRAWING E-920.2A FOR LIGHTING PANEL ULPK01A LOCATION.
- L08 CONNECT SLOT STYLE FIXTURES (TYPES R5, R6 & R7) TO ONE DIMMER SWITCH. CONNECT ALL DOWNLIGHTS (TYPE R8) TO THE SECOND DIMMER SWITCH.
- L09 MOUNT SWITCH AT TOP OF LADDER.
- L10 MOUNT FIXTURE 6" ABOVE PIT FLOOR.
- L11 ROUTE THROUGH LIGHTING CONTACTOR "LC1".
- L12 WALL MOUNT APPROXIMATELY 12'-6" AFF. CENTER OF FIXTURE.
- L13 ROUTE THROUGH LIGHTING CONTACTOR "LC1E".
- L14 CONNECT FIXTURES ENCLOSED IN THIS REGION TO DAYLIGHTING SENSOR.
- L16 EMERGENCY LIFE SAFETY PANEL ULSH03A IS LOCATED ON ELECTRICAL ROOM MEZZANINE. SEE SHEET 3-E-101A1.

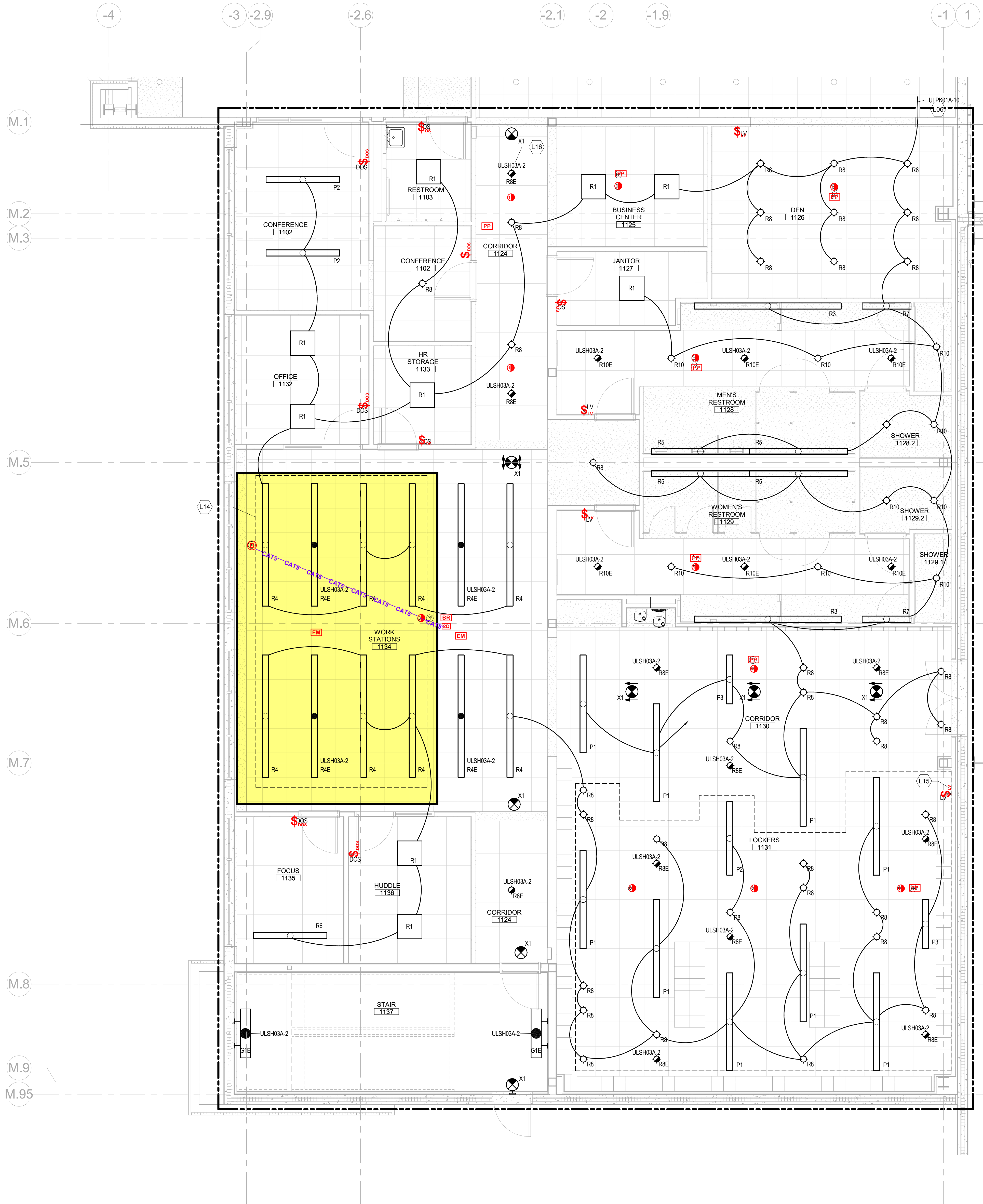
- Zones:
- 1-Daylight harvesting fixtures
  - 2-Projector zone highlighted in green
  - 3-All Others

1 FIRST FLOOR OFFICE AREA B - LIGHTING

1/4" = 1'-0"



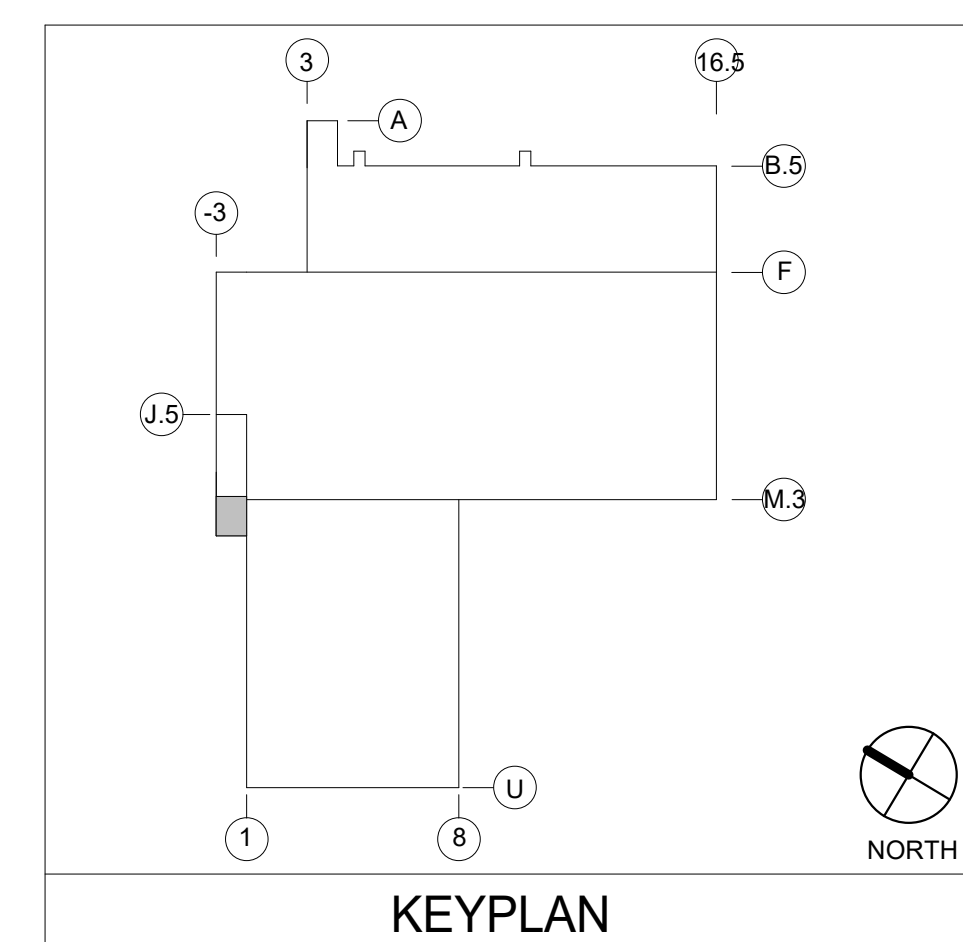




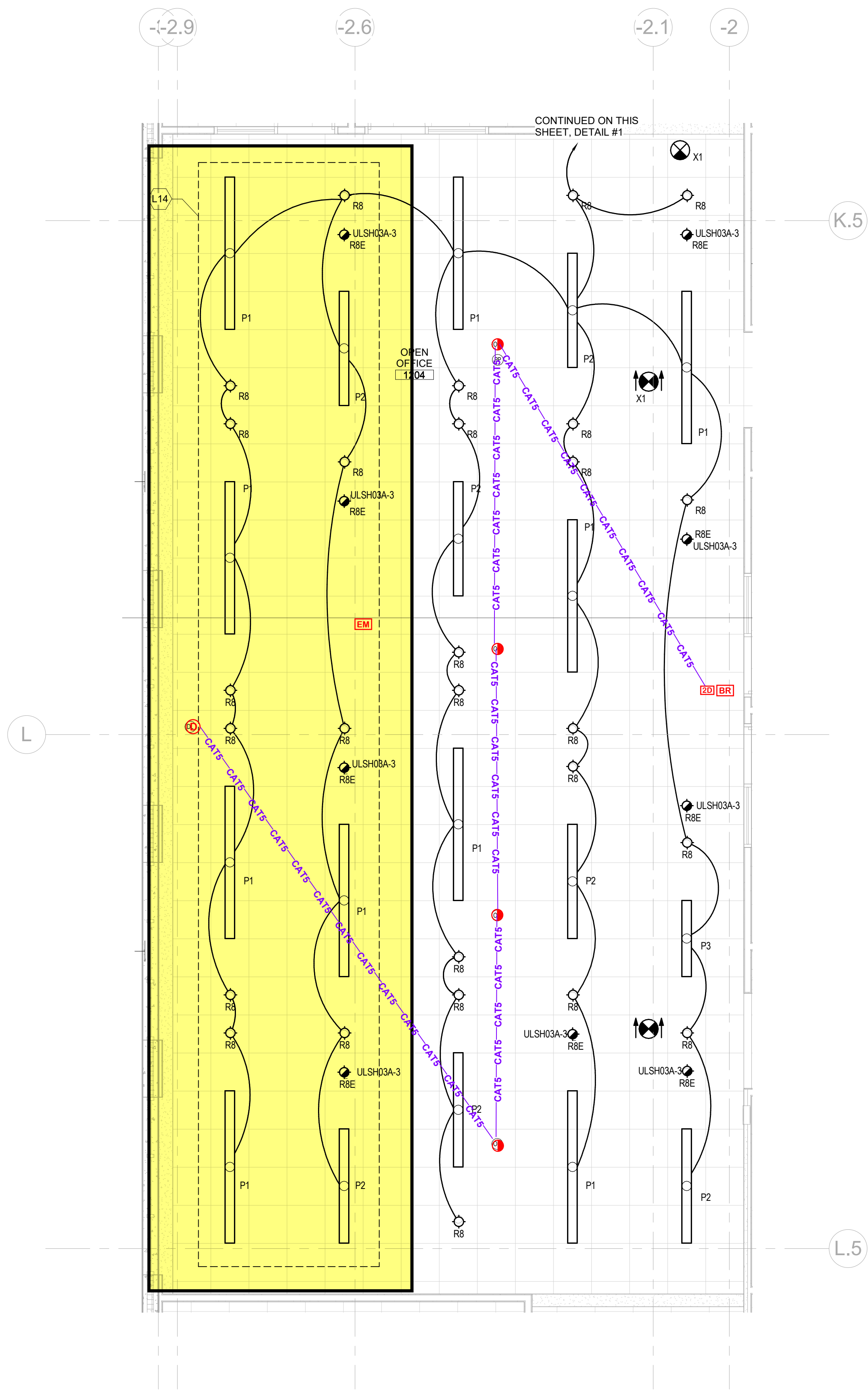
## KEY NOTES

- L06 SEE DRAWING E-920.2A FOR LIGHTING PANEL ULPK01A LOCATION.
- L14 CONNECT FIXTURES ENCLOSED IN THIS REGION TO DAYLIGHTING SENSOR.
- L15 THIS REGION SHALL BE CONTROLLED SEPERATELY FROM CORRIDOR 1130. LIGHTS SHALL BE CONTROLLED BY WALL SWITCH AND OCCUPANCY SENSORS IN THIS REGION.
- L16 EMERGENCY LIFE SAFETY PANEL ULSH03A IS LOCATED ON ELECTRICAL ROOM MEZZANINE. SEE SHEET 3-E-101A1.

**1 FIRST FLOOR OFFICE AREA C - LIGHTING**  
1/4" = 1'-0"





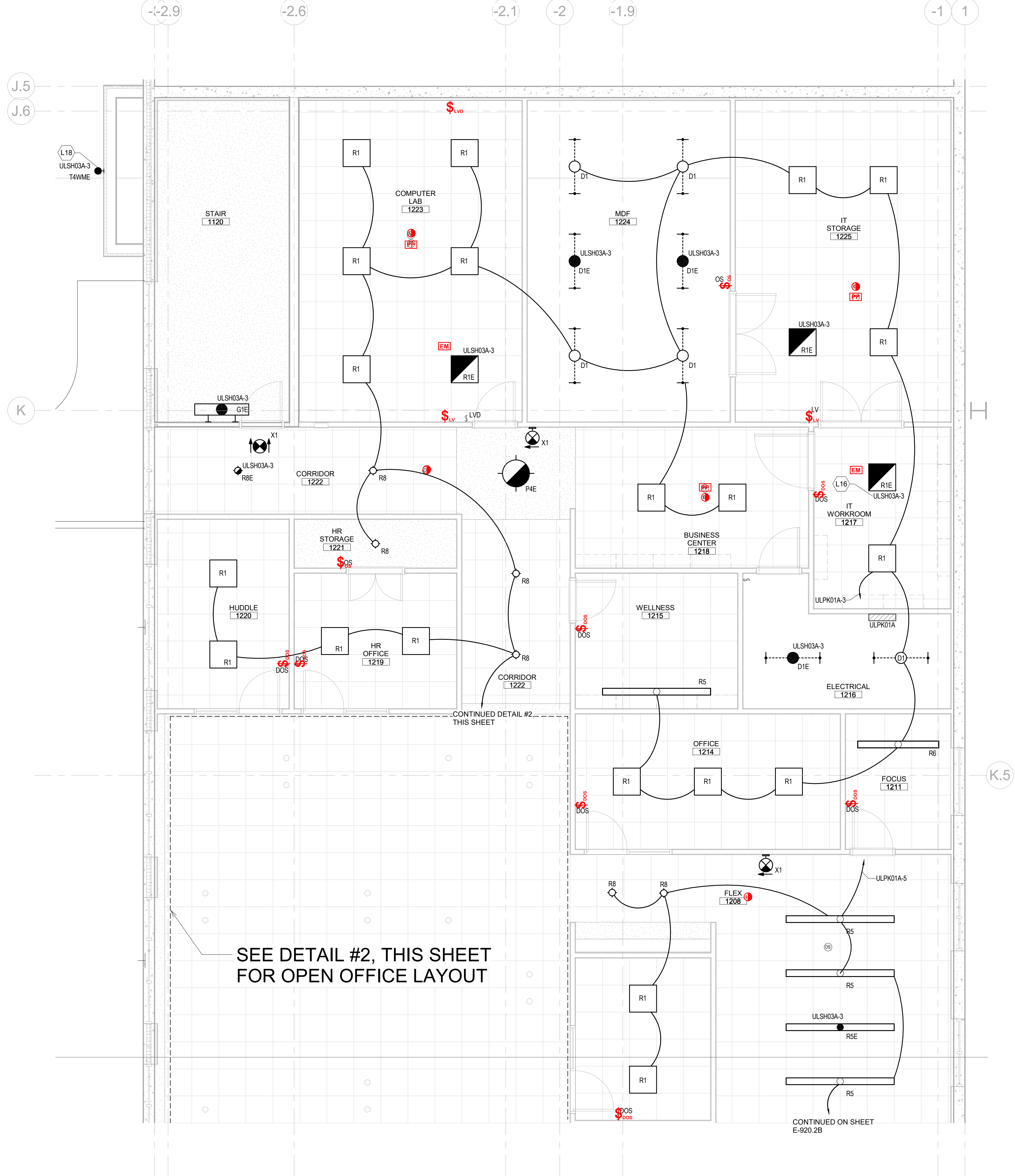


## 2 SECOND FLOOR OFFICE AREA A - LIGHTING

1/4" = 1'-0"

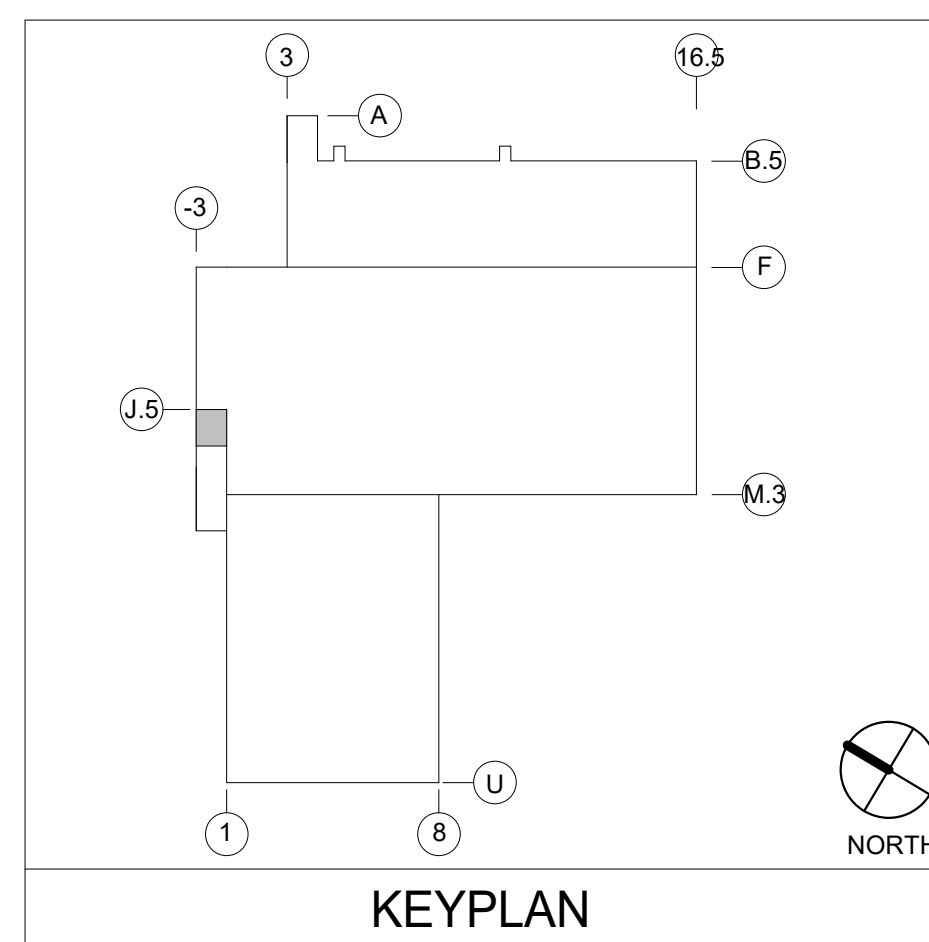
### KEY NOTES

- L14 CONNECT FIXTURES ENCLOSED IN THIS REGION TO DAYLIGHTING SENSOR.
- L16 EMERGENCY LIFE SAFETY PANEL ULSH03A IS LOCATED ON ELECTRICAL ROOM MEZZANINE. SEE SHEET 3-E-101A1.
- L18 MOUNT FIXTURE 34" ABOVE LEVEL ONE FINISH FLOOR.



## 1 SECOND FLOOR OFFICE AREA A - LIGHTING

1/4" = 1'-0"



KEYPLAN





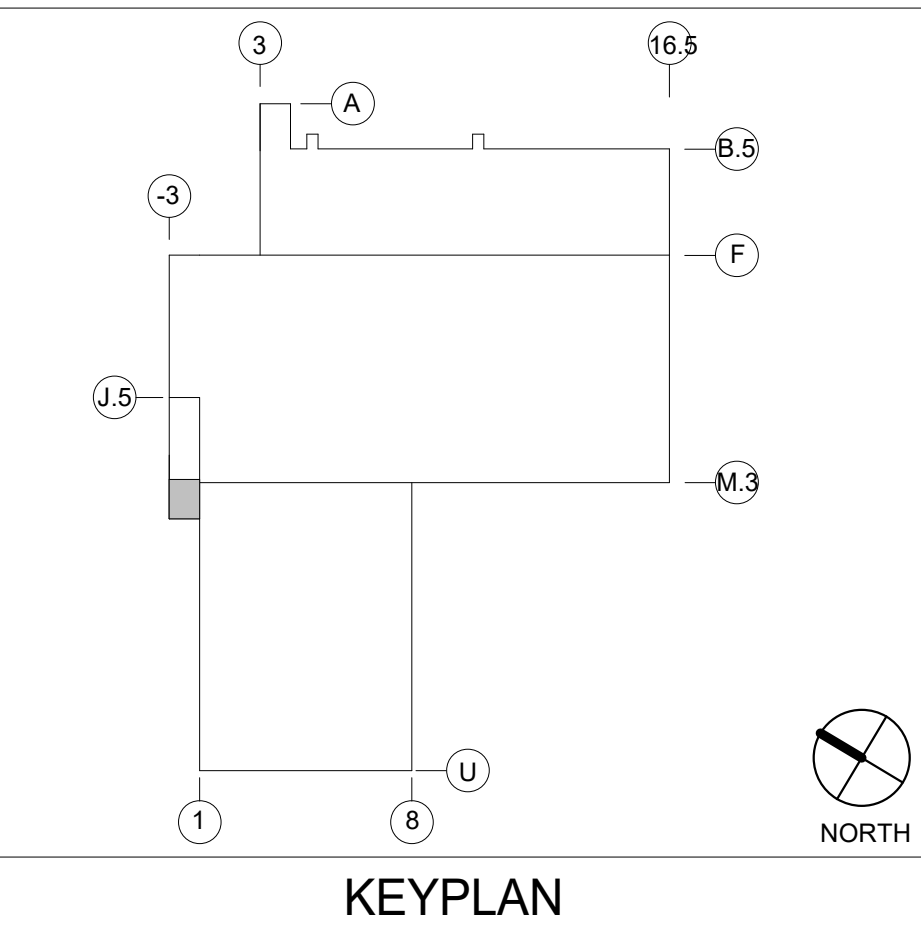
L17 DIMMER SWITCH FOR TRACK LIGHTING.





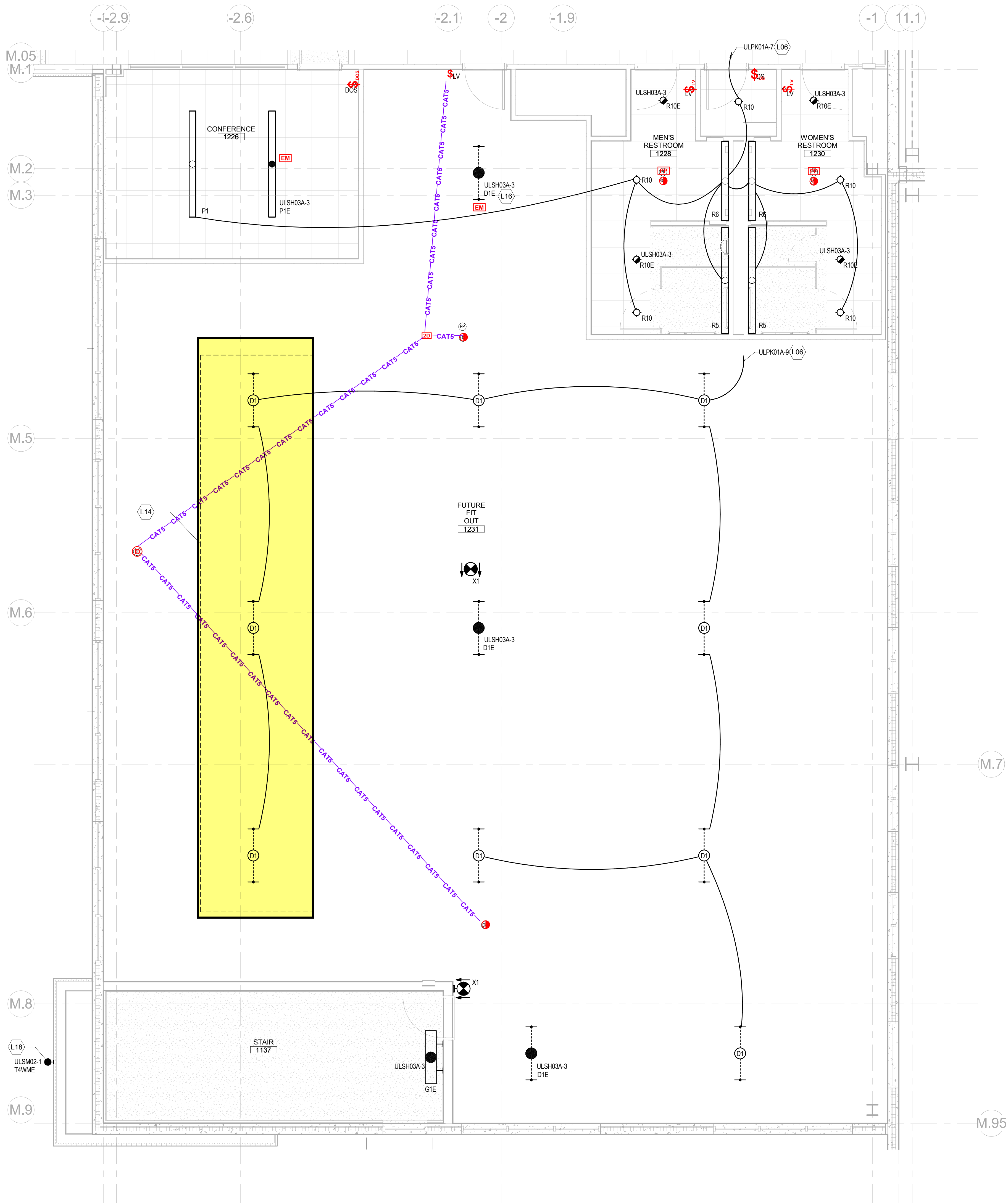
KEY NOTES

- L06 SEE DRAWING E-920.2A FOR LIGHTING PANEL ULPK01A LOCATION.  
L14 CONNECT FIXTURES ENCLOSED IN THIS REGION TO DAYLIGHTING SENSOR.  
L16 EMERGENCY LIFE SAFETY PANEL ULSH03A IS LOCATED ON ELECTRICAL ROOM MEZZANINE. SEE SHEET 3-E-101A1.  
L18 MOUNT FIXTURE 34' ABOVE LEVEL ONE FINISH FLOOR.



1 SECOND FLOOR OFFICE AREA C - LIGHTING

1/4" = 1'-0"



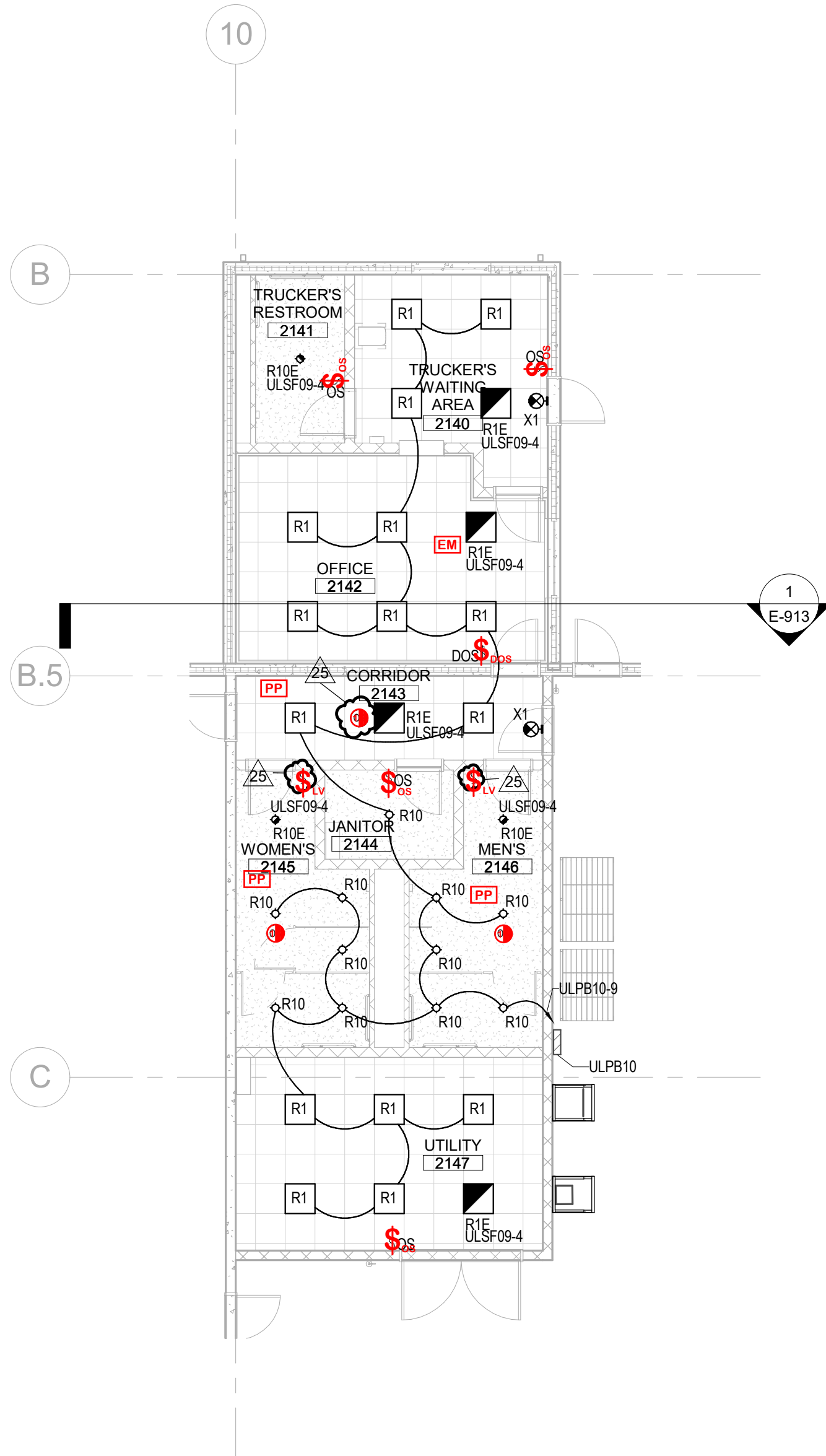


ELECTRICAL  
GENERAL NOTES:

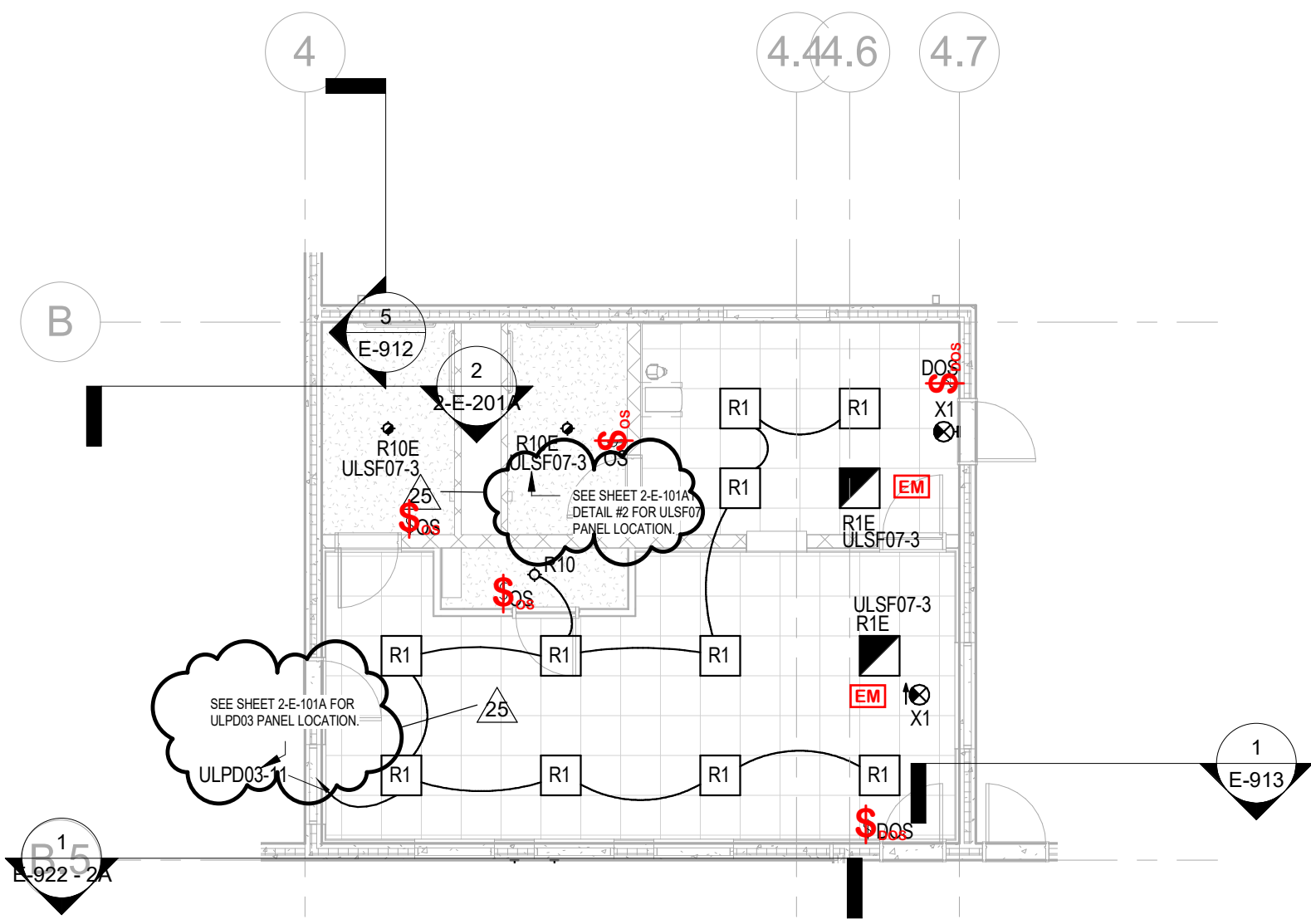
1. LIGHTING SYSTEM SHALL BE DIGITAL LUMENS WITH CONTROL SYSTEM. CONTACT GARY HUBBARD AT gdh@edesigntgroup.com; PHONE NUMBER 603-306-6958.
2. CONNECT ALL EMERGENCY FIXTURES TO AN UNSWITCHED HOT CONDUCTOR.
3. COORDINATE FINAL FIXTURE LOCATION WITH PROCESS EQUIPMENT.
4. EXIT LIGHTS SHALL BE POWERED BY AN UNSWITCHED HOT CONDUCTOR FROM THE NEAREST EMERGENCY LIGHTING CIRCUIT.

ELECTRICAL  
KEY NOTES:

25



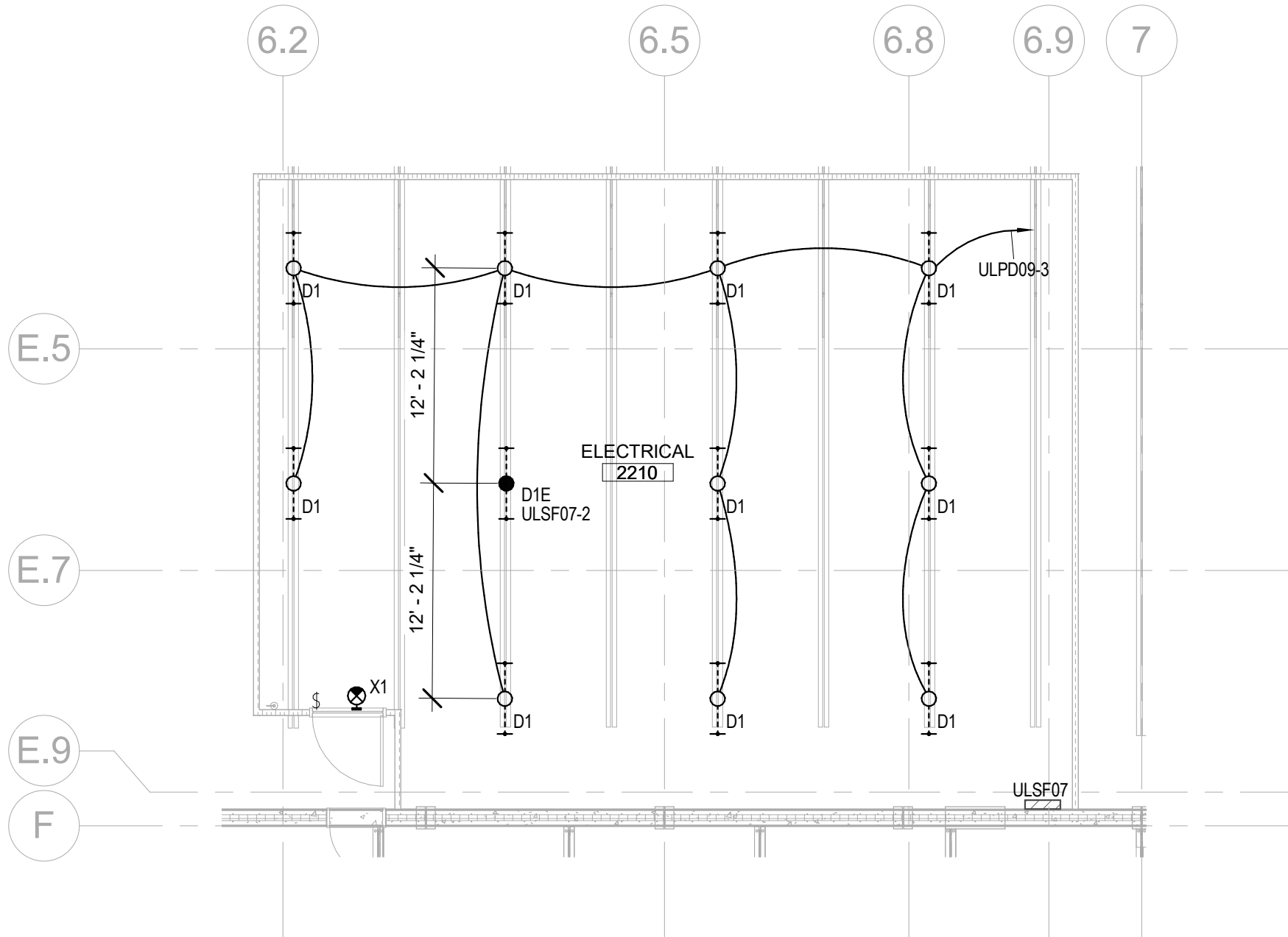
1 ENLARGED LIGHTING PLAN - RAW MATERIALS OFFICE  
1/8" = 1'-0"



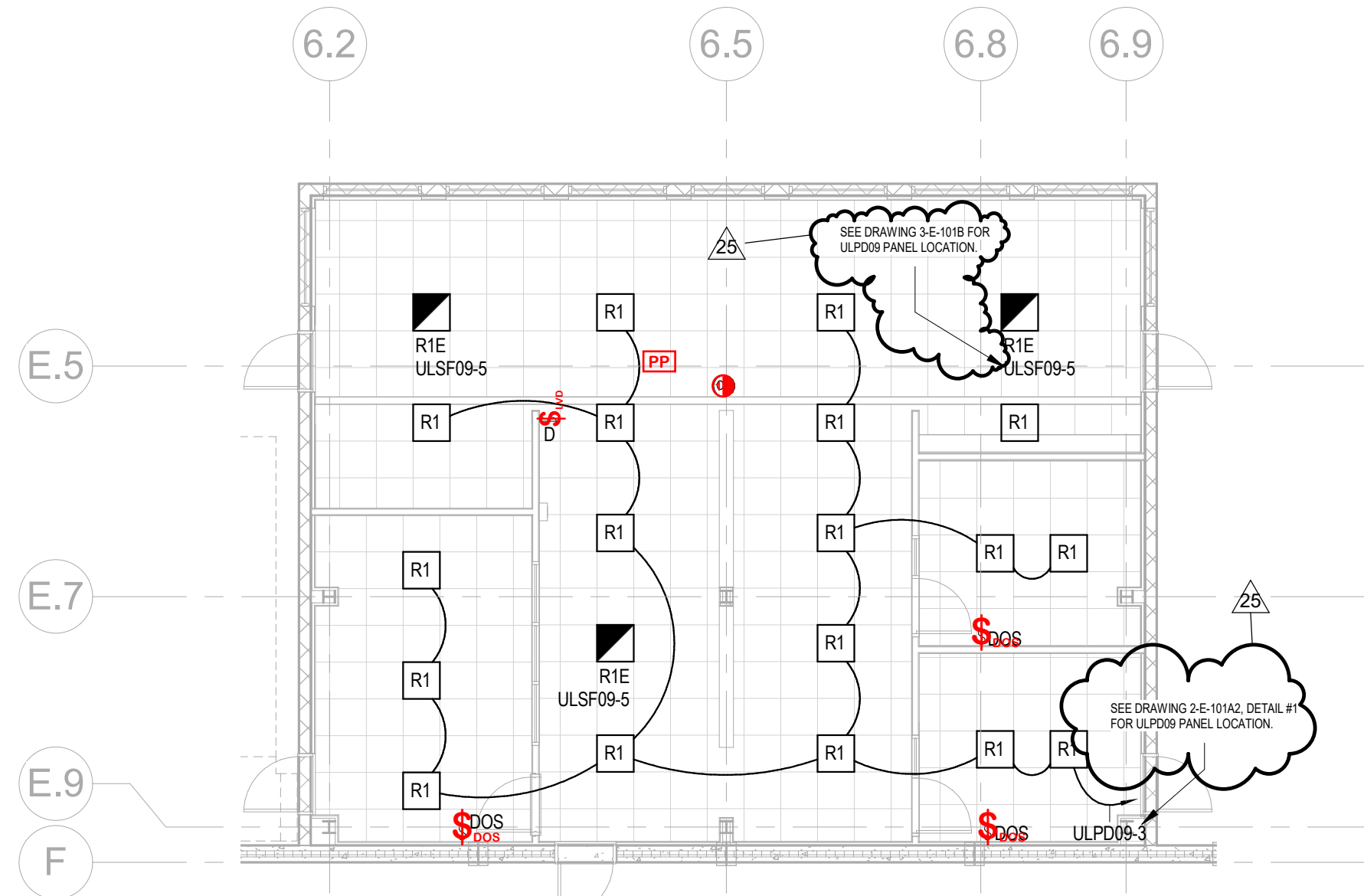
2 ENLARGED LIGHTING PLAN - RECEIVING OFFICE  
1/8" = 1'-0"

Line Voltage Controls

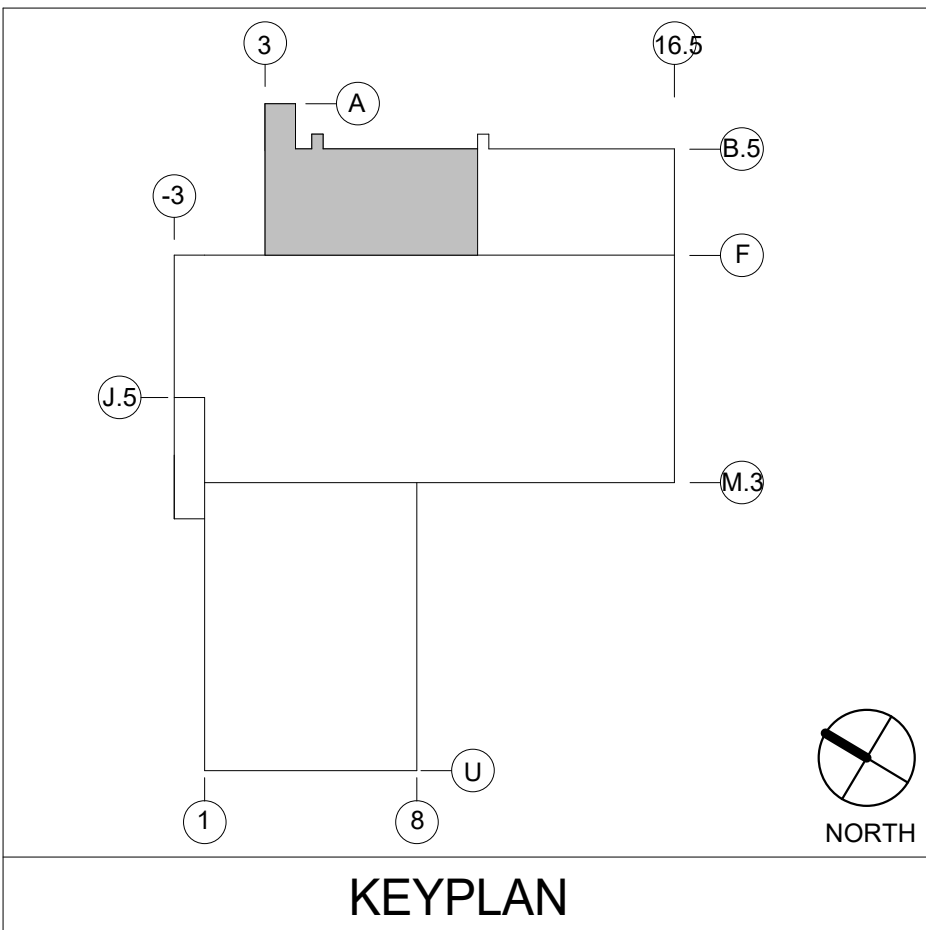
Description Quantity Comments



3 MEZZANINE LIGHTING PLAN  
1/8" = 1'-0"



4 ENLARGED LIGHTING PLAN - CONTROL/QA/QC  
1/8" = 1'-0"

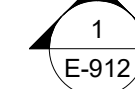


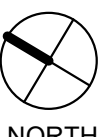
KEYPLAN



CONNECT ALL EMERGENCY FIXTURES TO AN UNSWITCHED HOT CONDUCTOR.  
EXIT LIGHTS SHALL BE POWERED BY AN UNSWITCHED HOT CONDUCTOR FROM THE NEAREST EMERGENCY LIGHTING CIRCUIT.

26


$$1/8'' = 1'-0''$$

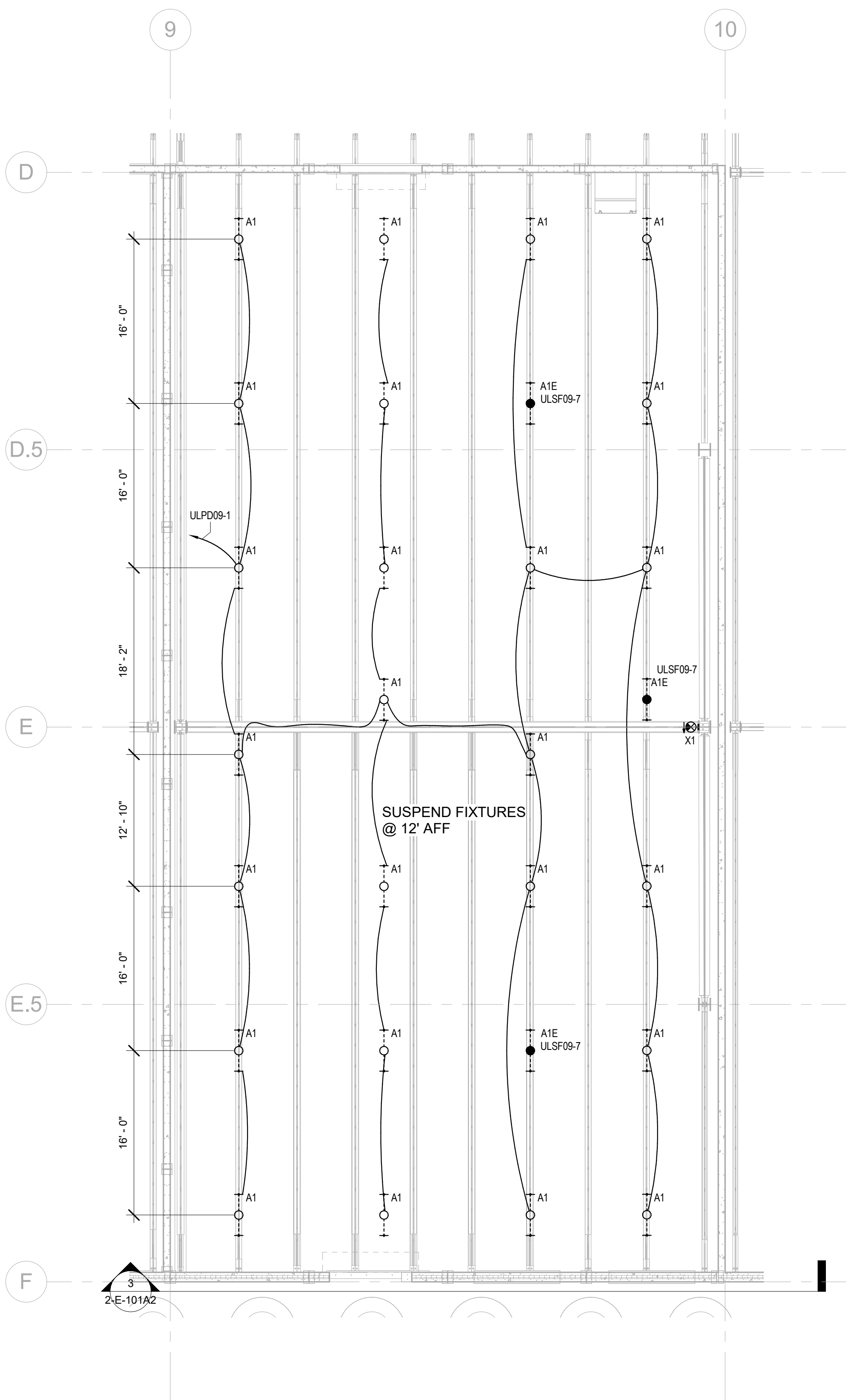
$$\frac{1}{8}'' = 1'-0''$$


## KEYPLAN

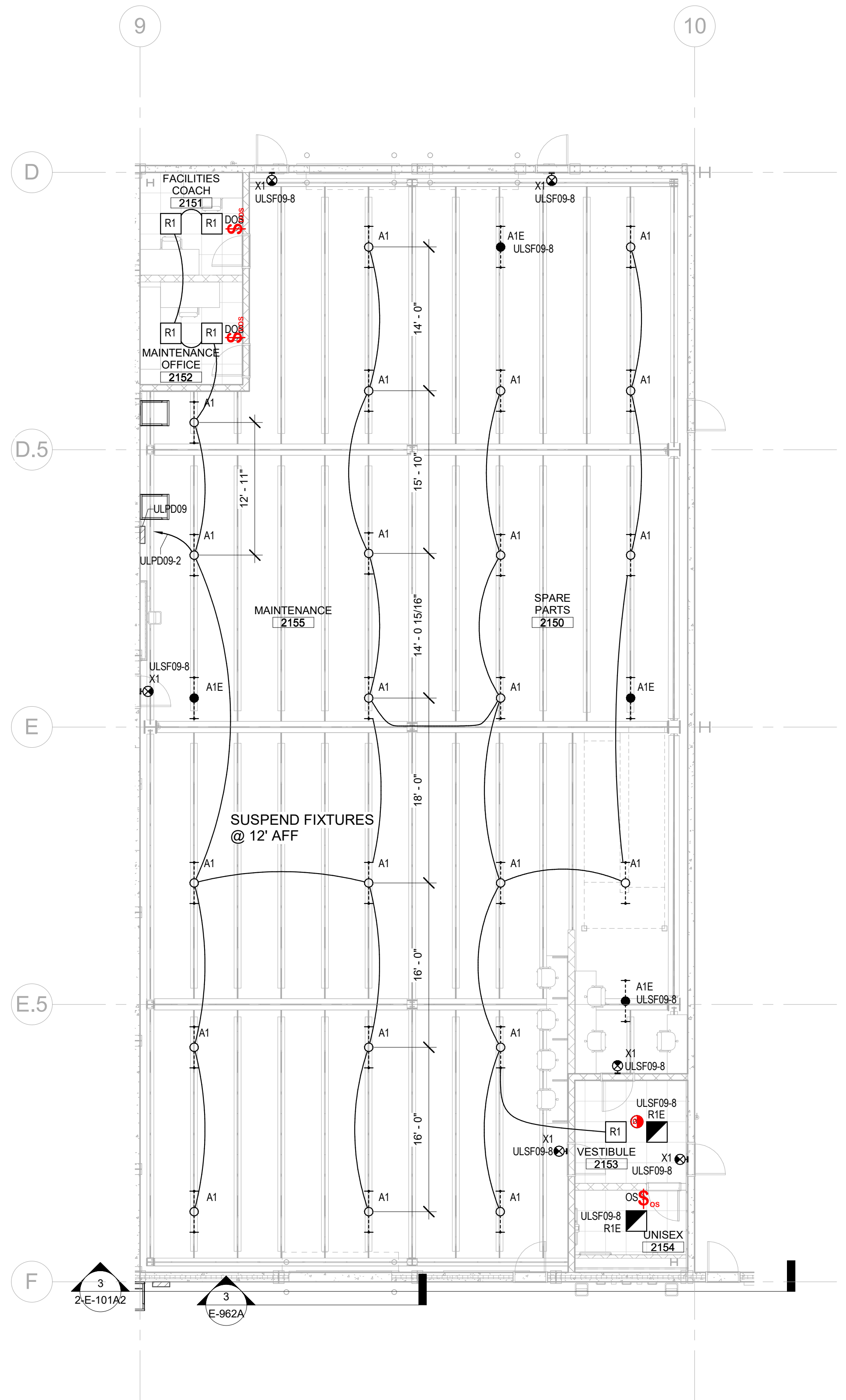


ELECTRICAL  
GENERAL NOTES:

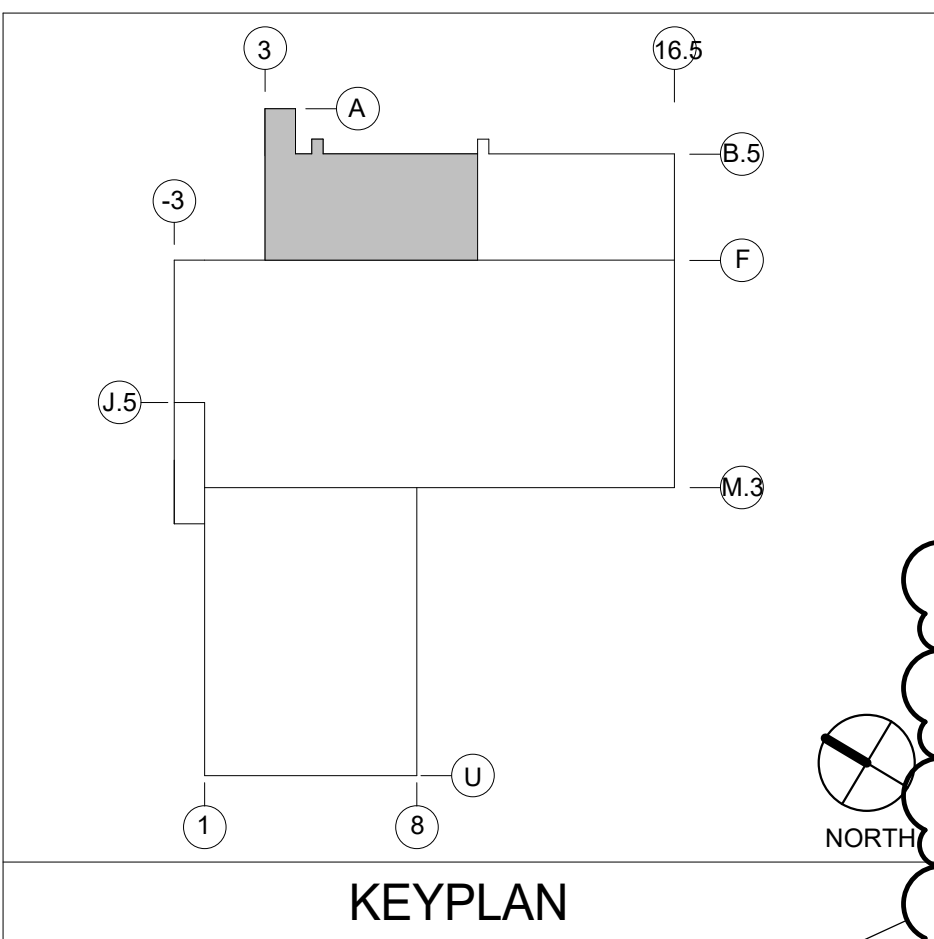
1. LIGHTING SYSTEM SHALL BE DIGITAL LUMENS WITH CONTROL SYSTEM. CONTACT GARY HUBBARD AT [gdh@redesigngroup.com](mailto:gdh@redesigngroup.com); PHONE NUMBER 603-306-6958.
2. CONNECT ALL EMERGENCY FIXTURES TO AN UNSWITCHED HOT CONDUCTOR.
3. COORDINATE FINAL FIXTURE LOCATION WITH PROCESS EQUIPMENT.
4. EXIT LIGHTS SHALL BE POWERED BY AN UNSWITCHED HOT CONDUCTOR FROM THE NEAREST EMERGENCY LIGHTING CIRCUIT.



**2 LIGHTING - MAINTENANCE MEZZANINE - AREA 2A**  
1/8" = 1'-0"



**1 ENLARGED LIGHTING PLAN - MAINTENANCE - AREA 2A**  
1/8" = 1'-0"



KEYPLAN