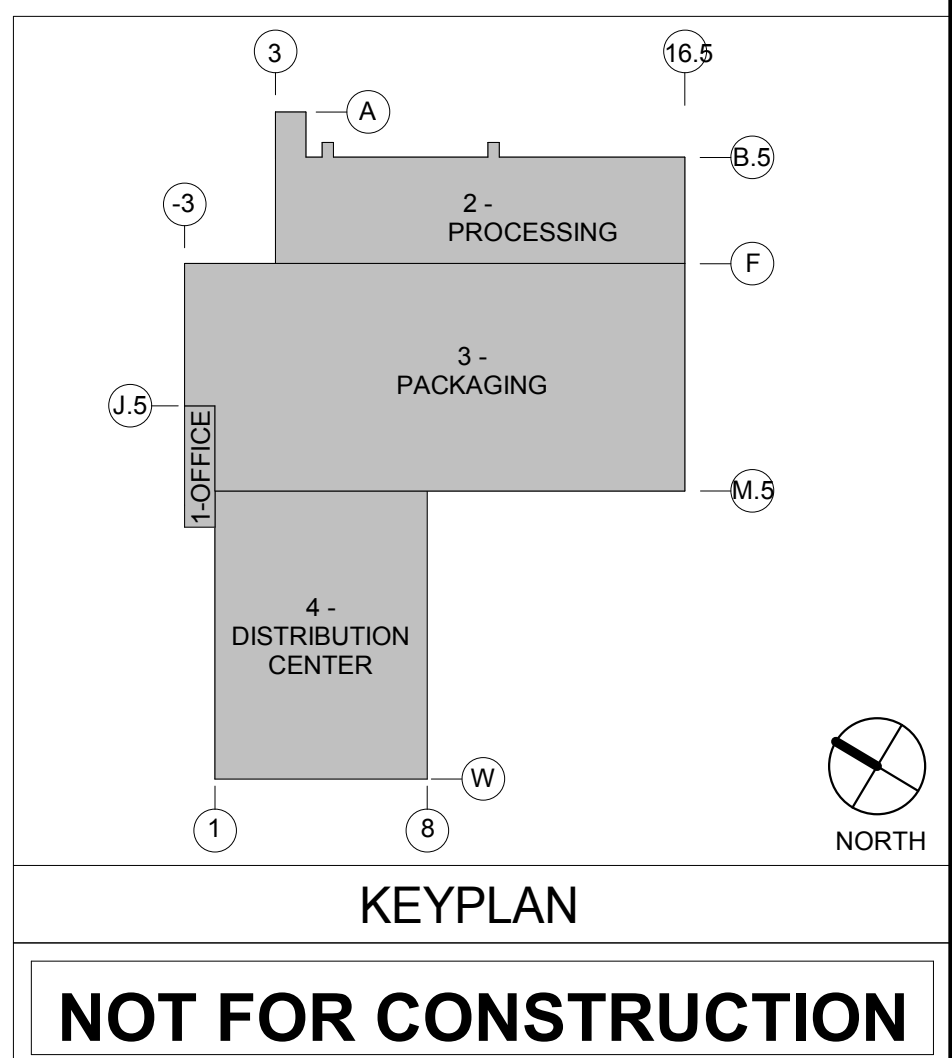


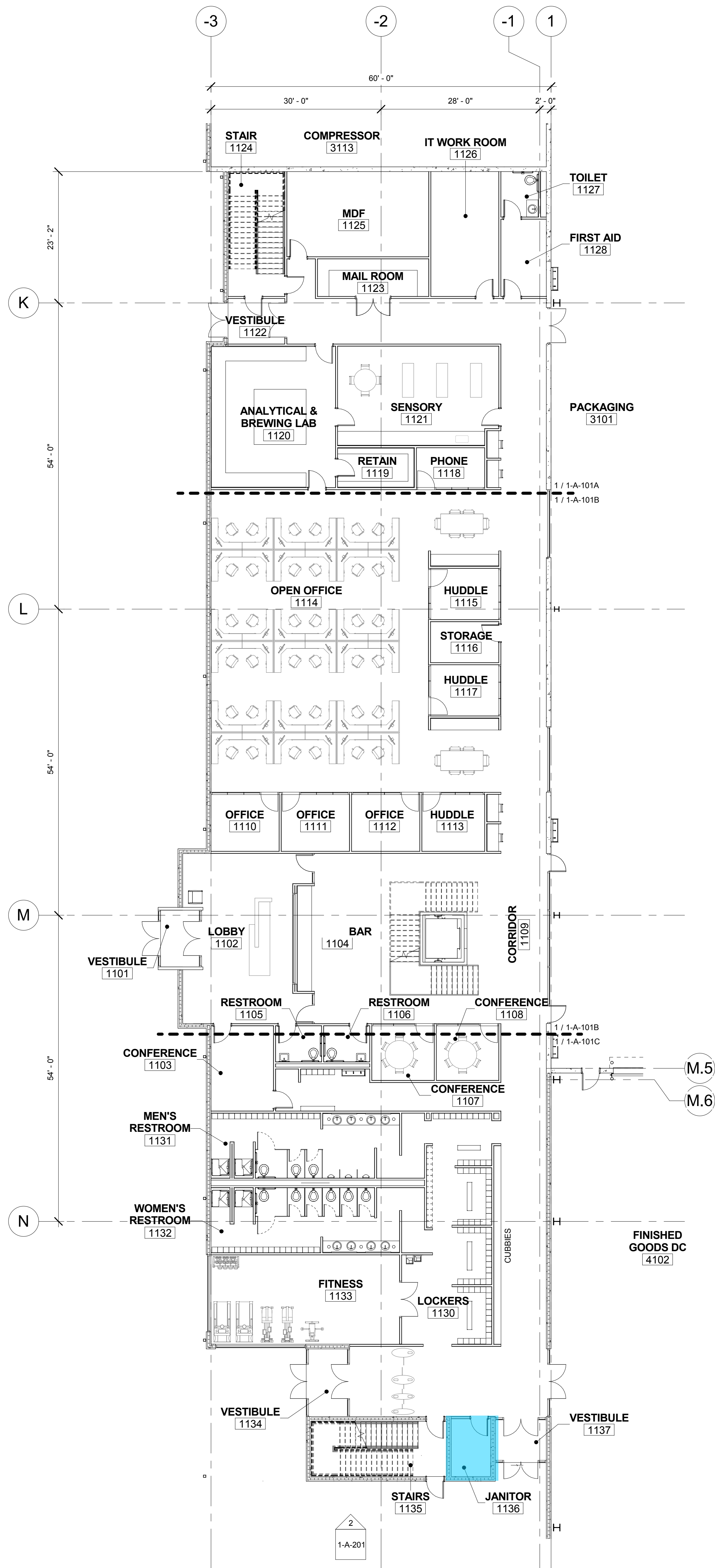
**1 OVERALL FIRST FLOOR PLAN**  
1/64" = 1'-0"

## Regularly Used Exterior Entrances

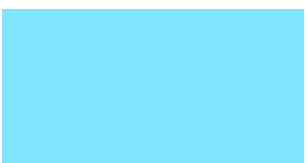
Install permanent entryway systems at least 10 feet long in the primary direction of travel to capture dirt and particulates entering the building at regularly used exterior entrances. Acceptable entryway systems include permanently installed grates, grilles, slotted system that allow for cleaning underneath, rollout mats, and any other materials manufactured as entryway systems with equivalent or better performance. Maintain all on a weekly basis. Entryway systems must be located indoors and be located immediately within the building entrance. Multiple entryway systems (e.g. 2 mats at the same entrance) are acceptable. The width of the entryway system must be the width of the building entrance.

\* For warehouse and distribution centers, entryways are not required at doors leading from the exterior to the loading dock or garage but must be installed between these spaces and adjacent office areas.



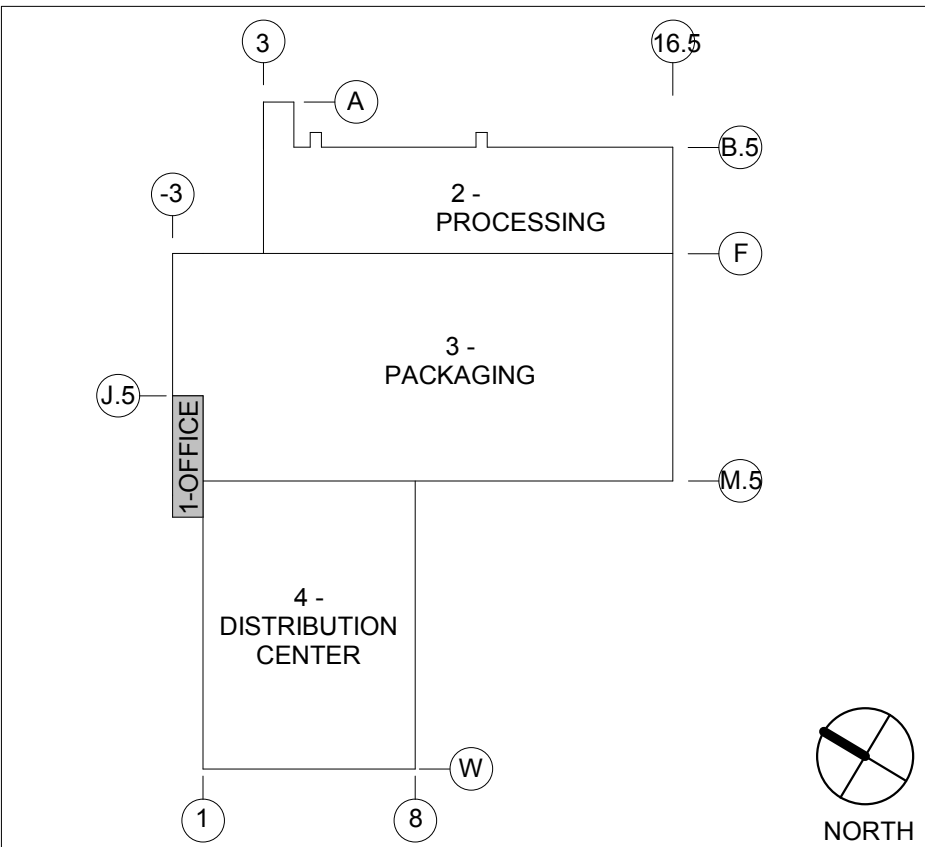


**1 OVERALL FIRST FLOOR PLAN**  
3/32" = 1'-0"



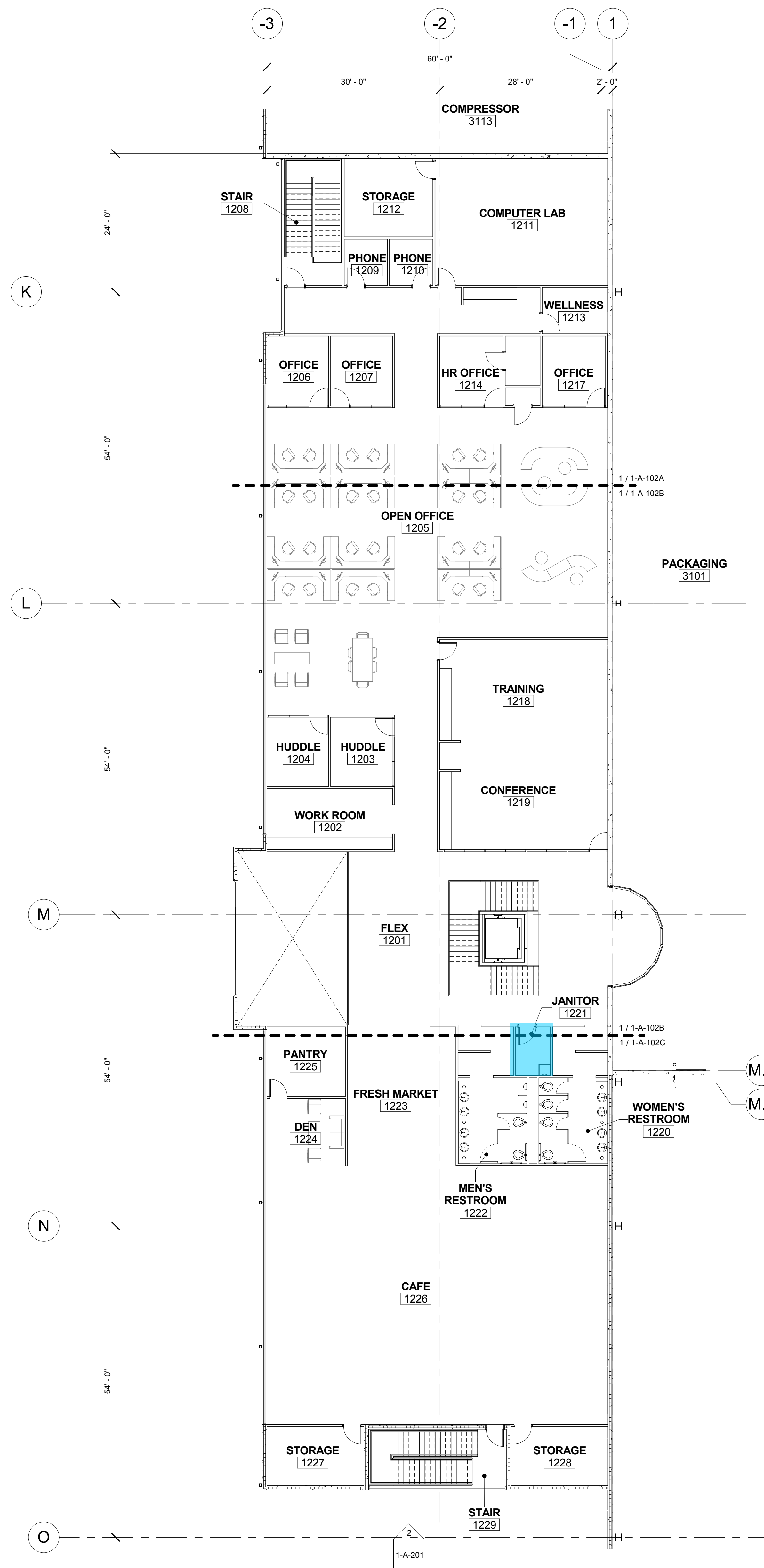
## Cross-Contamination Prevention Space

- \* 1. Sufficiently exhaust each interior cross-contamination prevention spaces with the exhaust rates determined in EQ Prerequisite Minimum Indoor Air Quality Performance or a minimum of 0.50 cfm per square foot to create negative pressure with respect to adjacent spaces when the doors to the room are closed.
- 2. Provide self-closing doors and deck-to-deck partitions or hard-lid ceiling.



KEYPLAN  
**NOT FOR CONSTRUCTION**



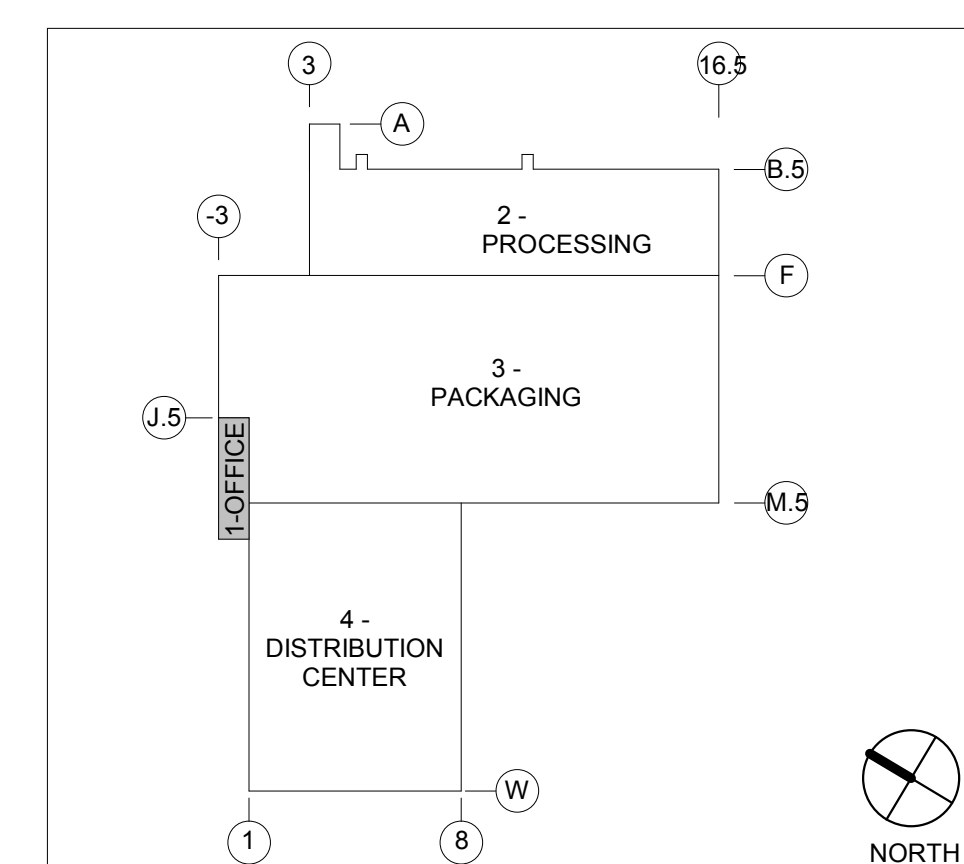


**1 OVERALL SECOND FLOOR PLAN**  
3/32" = 1'-0"

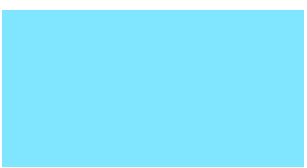


## Cross-Contamination Prevention Space

- \* 1. Sufficiently exhaust each interior cross-contamination prevention spaces with the exhaust rates determined in EQ Prerequisite Minimum Indoor Air Quality Performance or a minimum of 0.50 cfm per square foot to create negative pressure with respect to adjacent spaces when the doors to the room are closed.
- 2. Provide self-closing doors and deck-to-deck partitions or hard-lid ceiling.

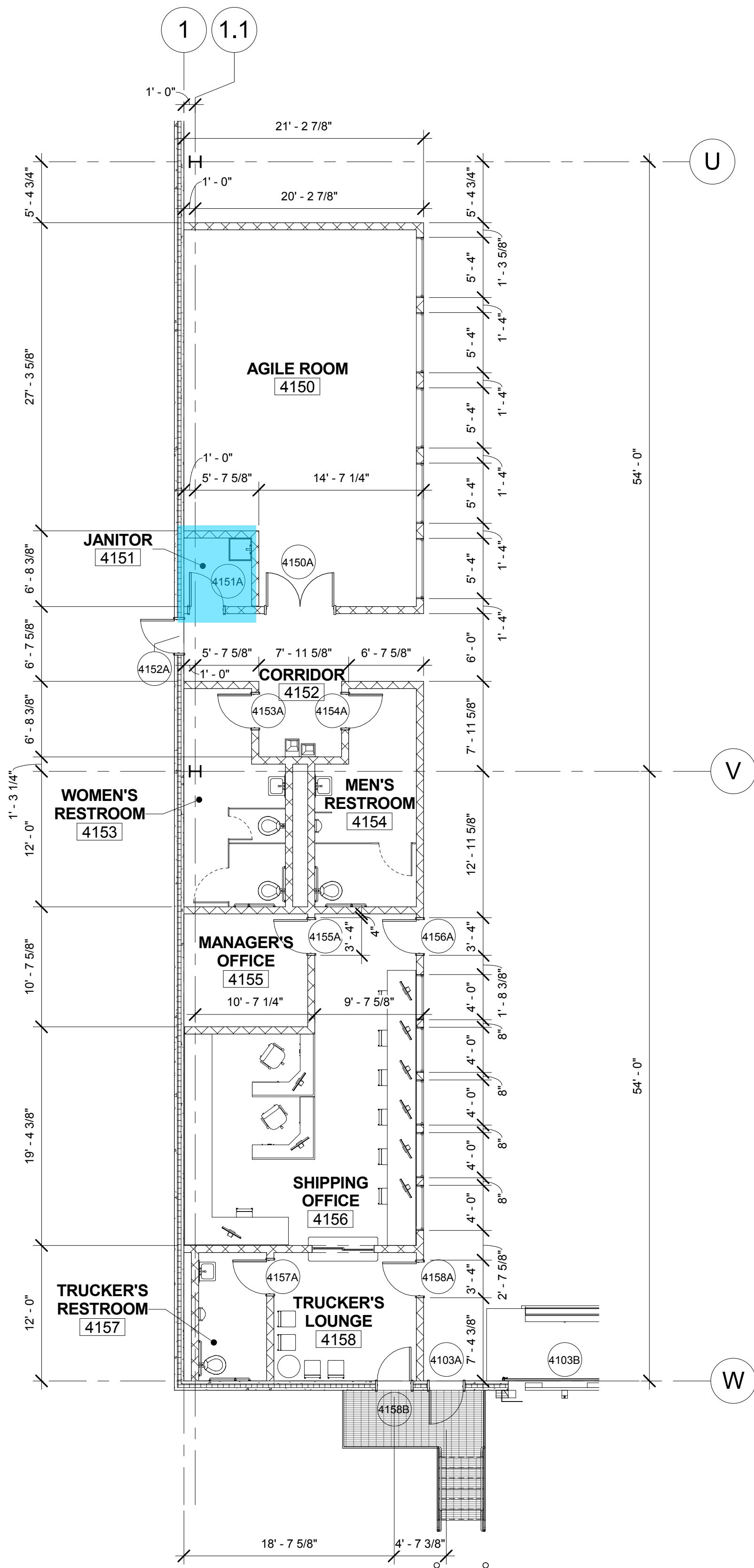


KEYPLAN  
**NOT FOR CONSTRUCTION**

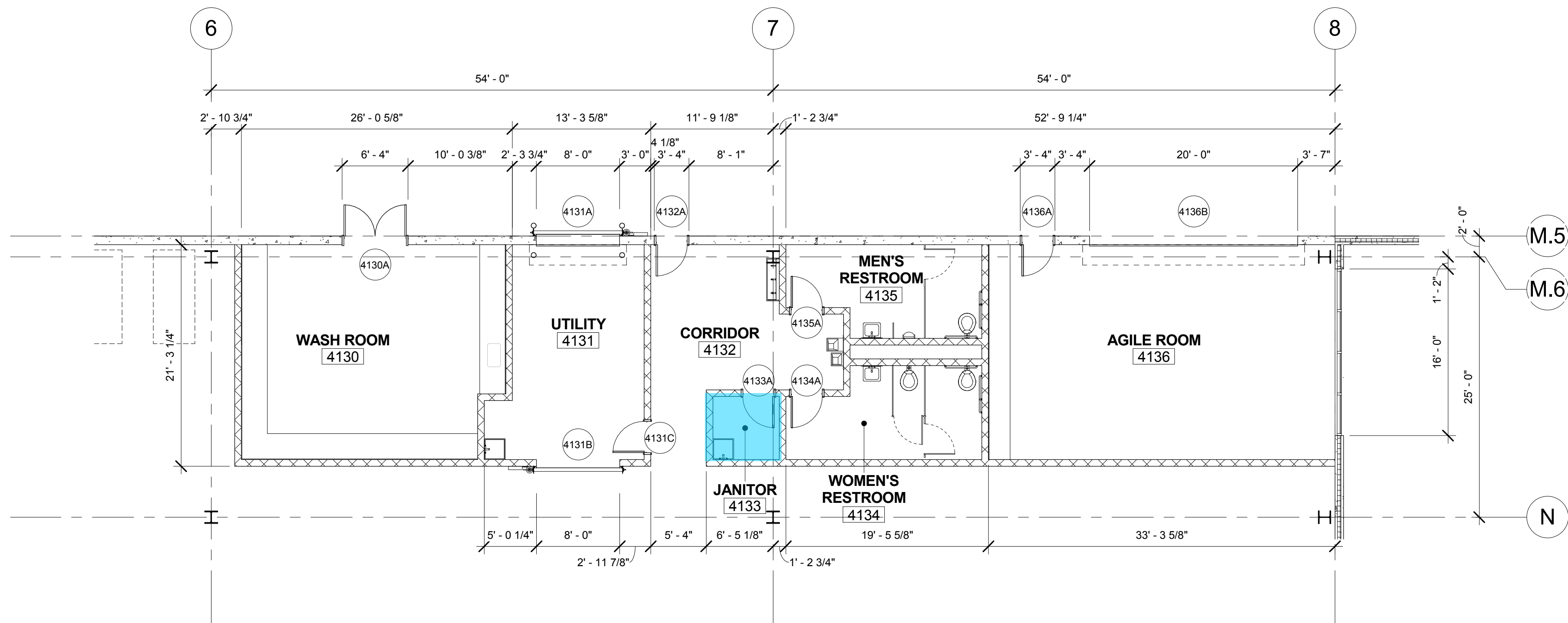


# Cross-Contamination Prevention Space

- \* 1. Sufficiently exhaust each interior cross-contamination prevention spaces with the exhaust rates determined in EQ Prerequisite Minimum Indoor Air Quality Performance or a minimum of 0.50 cfm per square foot to create negative pressure with respect to adjacent spaces when the doors to the room are closed.
- 2. Provide self-closing doors and deck-to-deck partitions or hard-lid ceiling.



1 SHIPPING OFFICE FLOOR PLAN - DC  
1/8" = 1'-0"



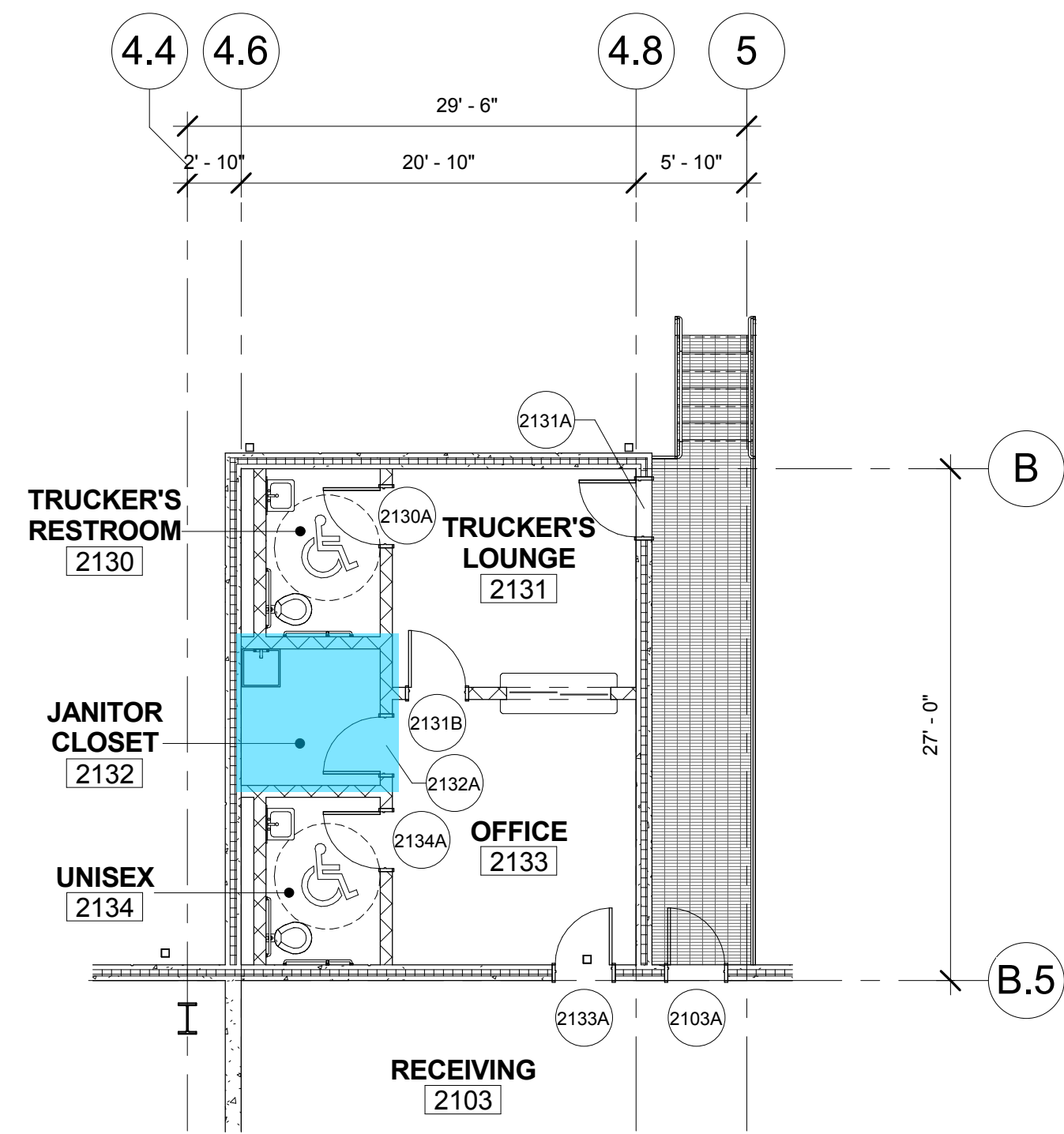
2 ENLARGED FLOOR PLAN - UTILITY AREA - DC  
1/8" = 1'-0"

# Cross-Contamination Prevention Space

- \* 1. Sufficiently exhaust each interior cross-contamination prevention spaces with the exhaust rates determined in EQ Prerequisite Minimum Indoor Air Quality Performance or a minimum of 0.50 cfm per square foot to create negative pressure with respect to adjacent spaces when the doors to the room are closed.
- 2. Provide self-closing doors and deck-to-deck partitions or hard-lid ceiling.

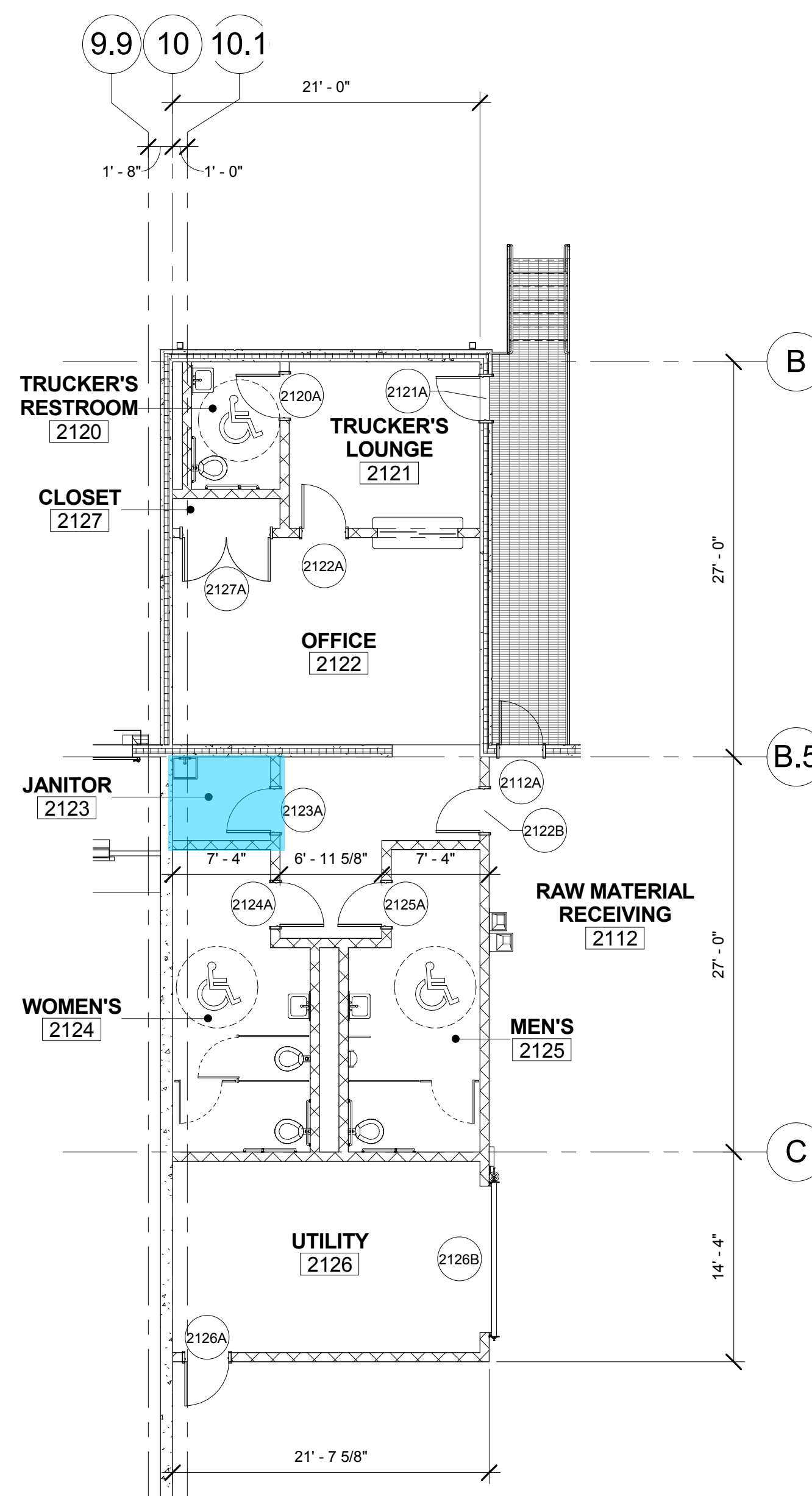
1 ENLARGED FLOOR PLAN - RECEIVING OFFICE

1/8" = 1'-0"



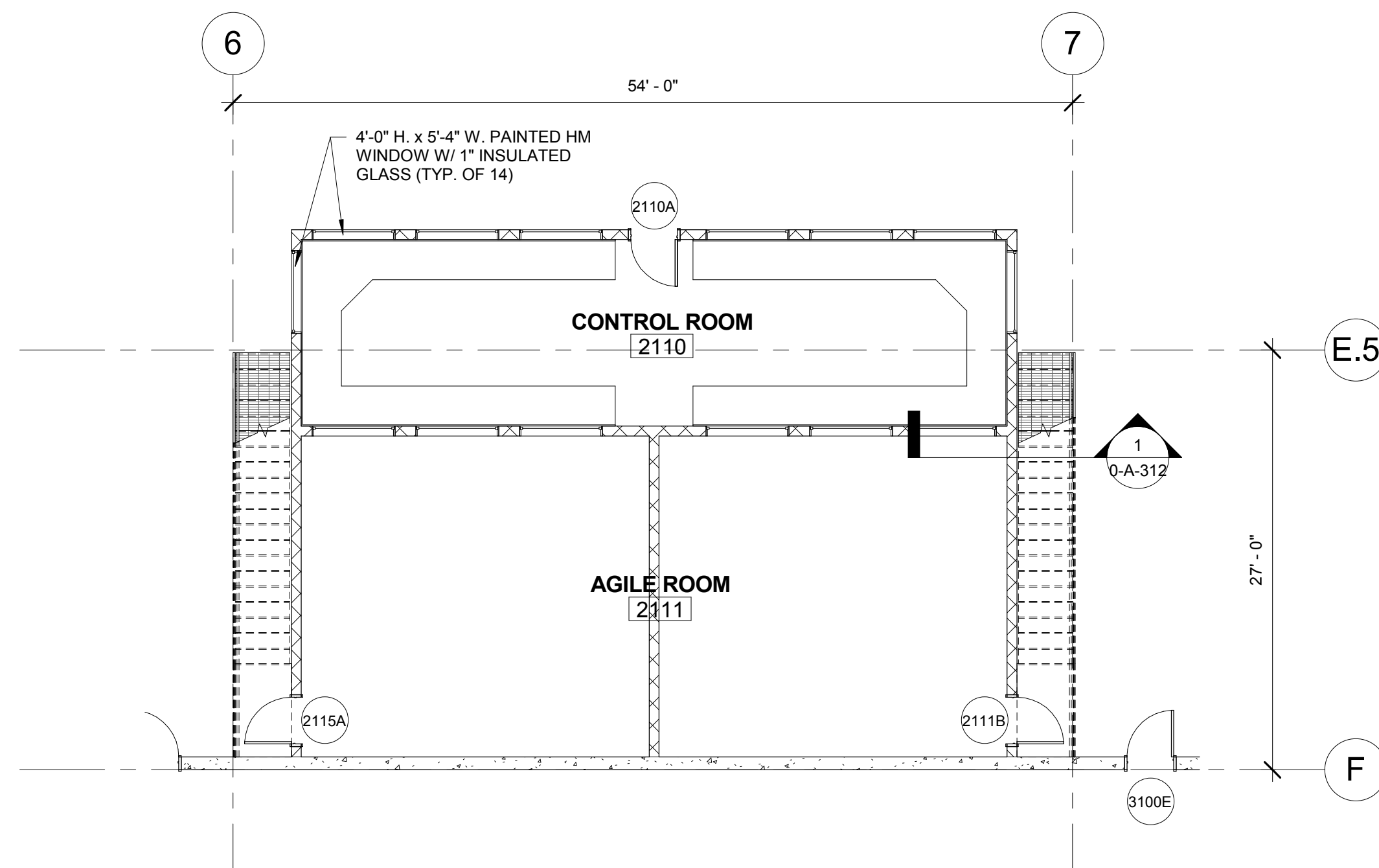
2 ENLARGED FLOOR PLAN - RAW MATERIALS OFFICE

1/8" = 1'-0"



3 ENLARGED FLOOR PLAN - CONTROL/AGILE ROOM

1/8" = 1'-0"



4 ENLARGED MEZZANINE PLAN - ELECTRICAL ROOM

1/8" = 1'-0"

