



Base building duct sealed prior to work beginning.

11-3-07  
SMACNA 3.2.1



Base building elevator bank was sealed to protect shaftway from construction/demolition dust.

11-3-07  
SMACNA 3.1



Designated segregated area for containers was used during the project.

11-3-07  
SMACNA 3.1



Typical plastic curtain wall to contain dust during construction.

11-3-07  
SMACNA 3.5



Specialty dust collecting drill  
used for ceiling drilling to  
minimize airborne dust.

11-3-07  
SMACNA 3.5



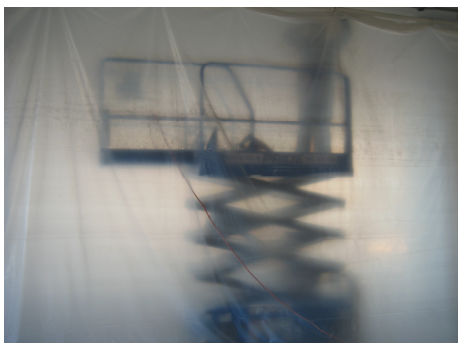
Dust collecting floor sander to  
minimize dust. This work was  
performed after hours with no  
other tradesmen present.

11-3-07  
SMACNA 3.5



Typical plastic curtain for column  
work to control dust while  
columns were being refinished.

12-3-07  
SMACNA 3.5



Ceiling work being performed  
behind protective plastic curtain.

12-3-07  
SMACNA 3.5



Sealed duct work delivered to site before installation.

12-3-07  
SMACNA 3.2.3



Installed duct work with seal intact until final connections could be made.

12-3-07  
SMACNA 3.2.3



Sealed concrete floor to reduce airborne elements in under floor plenum.

12-3-07  
SMACNA 3.5



Temporary sealing of raised floor where new air handling unit will be installed. This is to protect under floor plenum before air handling units could be installed.

12-3-07  
SMACNA 3.2.3





Sealed return air duct that  
supplies typical air handling unit  
prior to unit start up

12-3-07  
SMACNA 3.2.1



Cleaning under the raised floor  
prior to sealing floor & installing  
carpet

1-29-08  
SMACNA 3.5



Cleaning under the raised floor  
prior to sealing floor & installing  
carpet

1-29-08  
SMACNA 3.5



Cleaning under the raised floor  
prior to sealing floor & installing  
carpet

1-29-08  
SMACNA 3.5





Sealed raised floor prior to carpet installation to maintain dust-free conditions

1-29-08  
SMACNA 3.5



Typical MERV 8 filters used for initial start up of the system. Filters to be upgraded to MERV 14 prior to occupancy

1-29-08  
SMACNA 3.2.2



MERV 8 filters installed prior to unit start up

1-29-08  
SMACNA 3.2.2